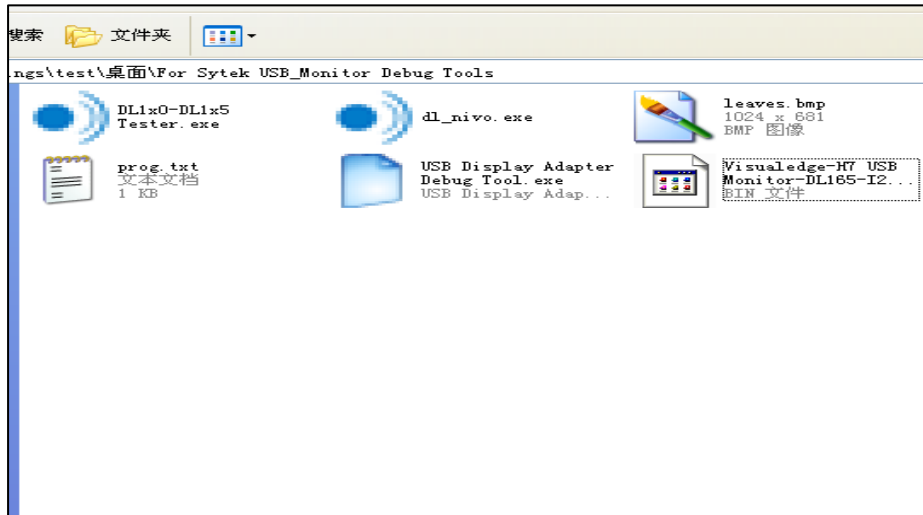


How to update the firmware

P.S. You will need to install DisplayLink software before you do the firmware update!!!!

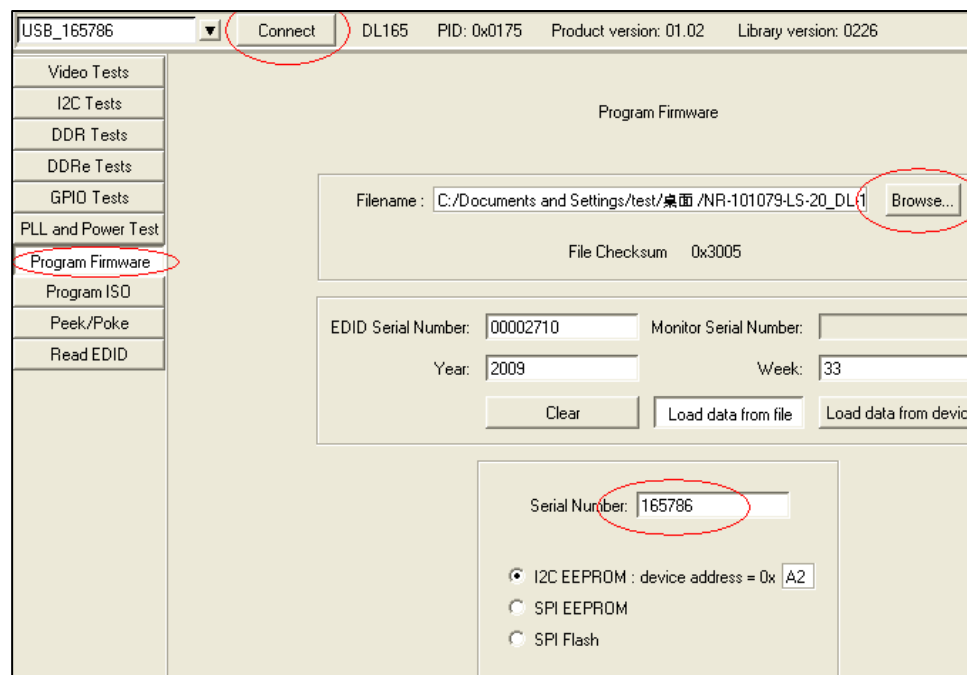
Step 1: Go to Tools file and execute the “DL1x0-DL1x5.exe as below and double click it.

解压缩文档后，在文件夹内选择 DL1x0-DL1x5 Tester.exe 并双击打开其 UI 界面



Step 2: Click the “Connect” bottom as following and then select “Program Firmware” :

在打开的 UI 界面，先点击 Connect 按钮(若连接不上，则需要检查线路是否有问题)，再选择 Program Firmware 选项



Step 3: Click the “Browse” button to select the firmware file and then give it 6 digit # as it show on the above. You can click “Program” button to program the firmware.

接上图，打开 Browse 之后，选择相应的 Firmware,并选中它。Serial Number 方框中，键入 6 位数的 serial number. 执行完以上操作后，点击 Program 选项，进行 firmware 烧录。

The screenshot shows a web-based interface for programming firmware. At the top, there are input fields for 'EDID Serial Number' (containing '00002710'), 'Monitor Serial Number' (empty), 'Year' (containing '2009'), and 'Week' (containing '33'). Below these are three buttons: 'Clear', 'Load data from file', and 'Load data from device'. In the center, there is a box containing a 'Serial Number' field with the value '165786' circled in red. Below this box are three radio button options: 'I2C EEPROM : device address = 0x A2' (selected), 'SPI EEPROM', and 'SPI Flash'. At the bottom, there are two buttons: 'Download' and 'Program', with the 'Program' button circled in red.

Step4. Close the program.