

Thermal Printer Driver Installation Guide

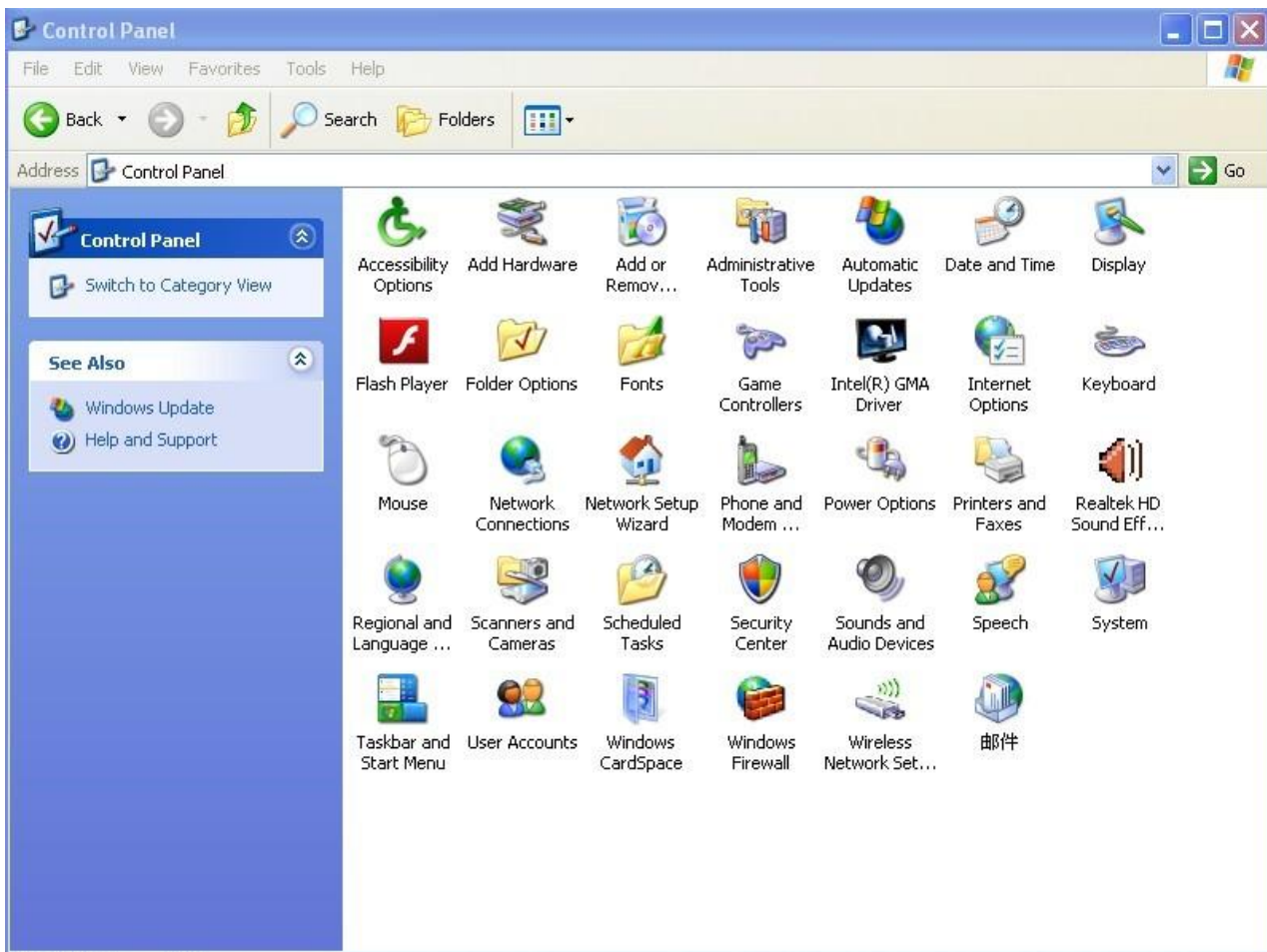
Firstly please connect thermal printer and power adapter, put a paper roll into printer, then install printer driver as following steps.

Step 1

When you get the printer CD from Nexa printer box, you will find **Driver, Tools, Program Manual** folders; From **Driver** folder, you will find driver file **PX80DRV**, please copy to your computer (e.g. disk D:\).

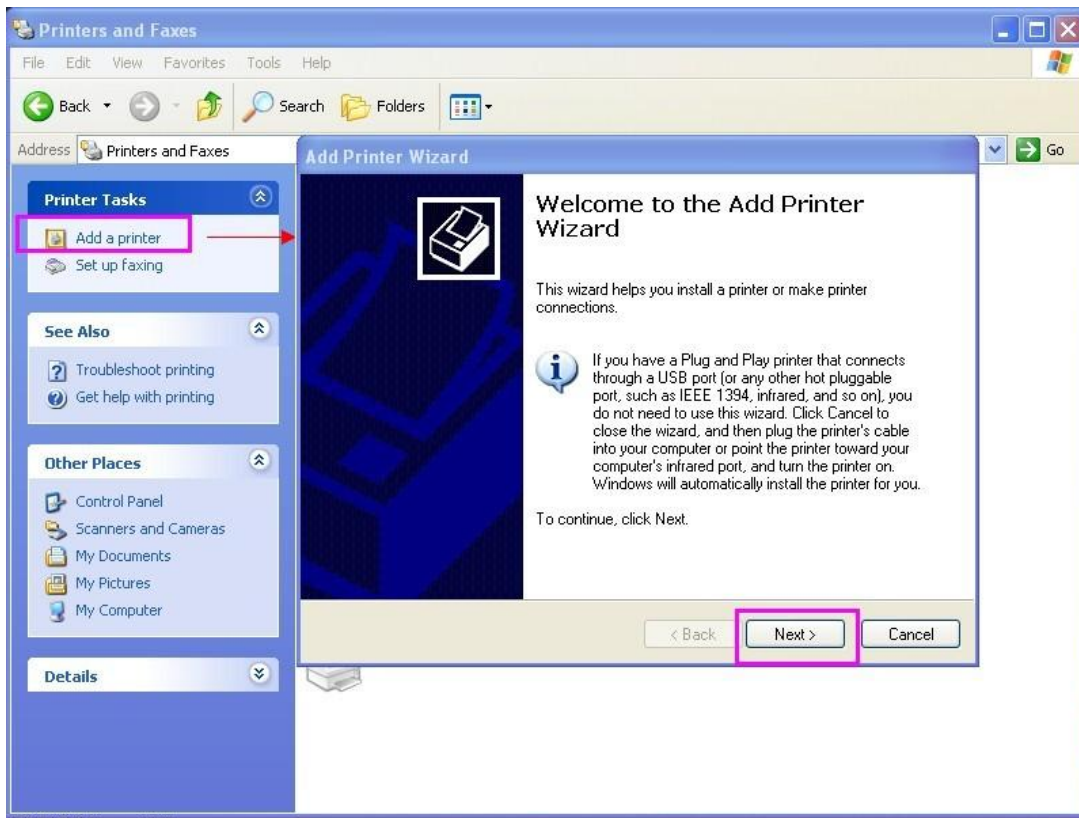
Step 2

Please go to **Control Panel** ---> **Printers and Faxes**, double click the icon to continue.



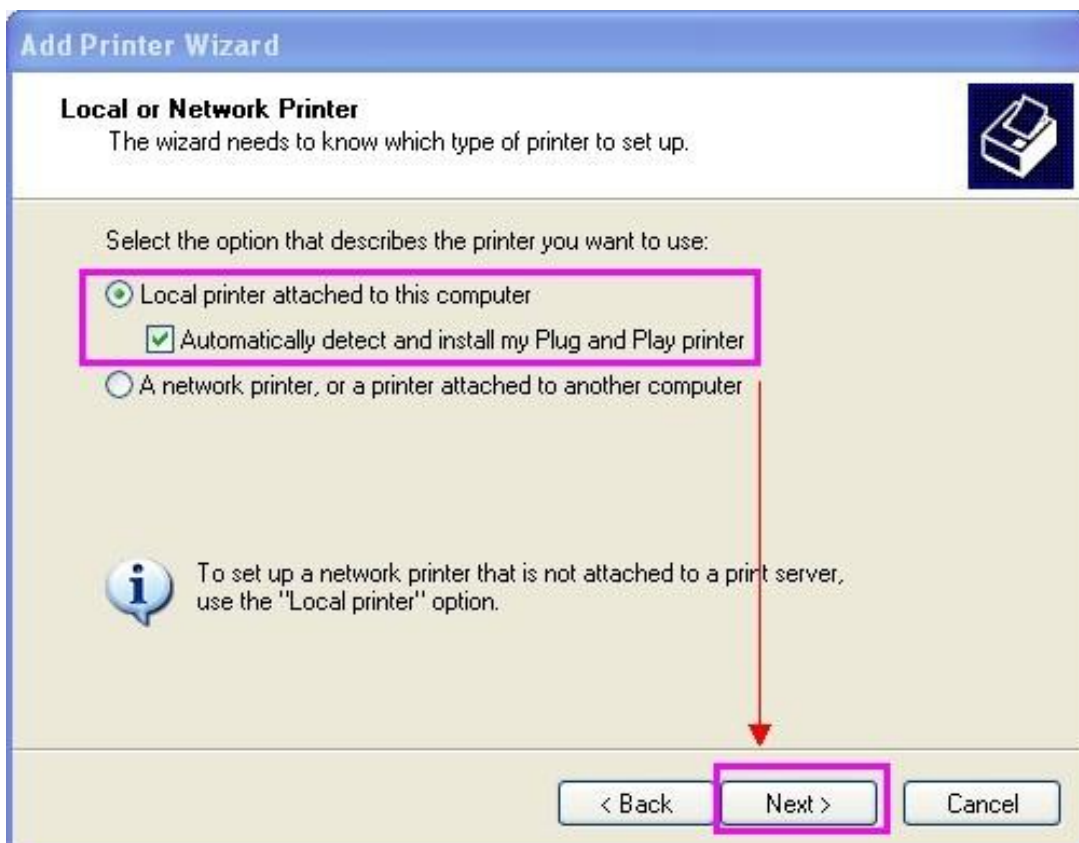
Step 3

Double click **Add a printer**, and **Add Printer Wizard** dialog box will appear, click **Next** to continue.



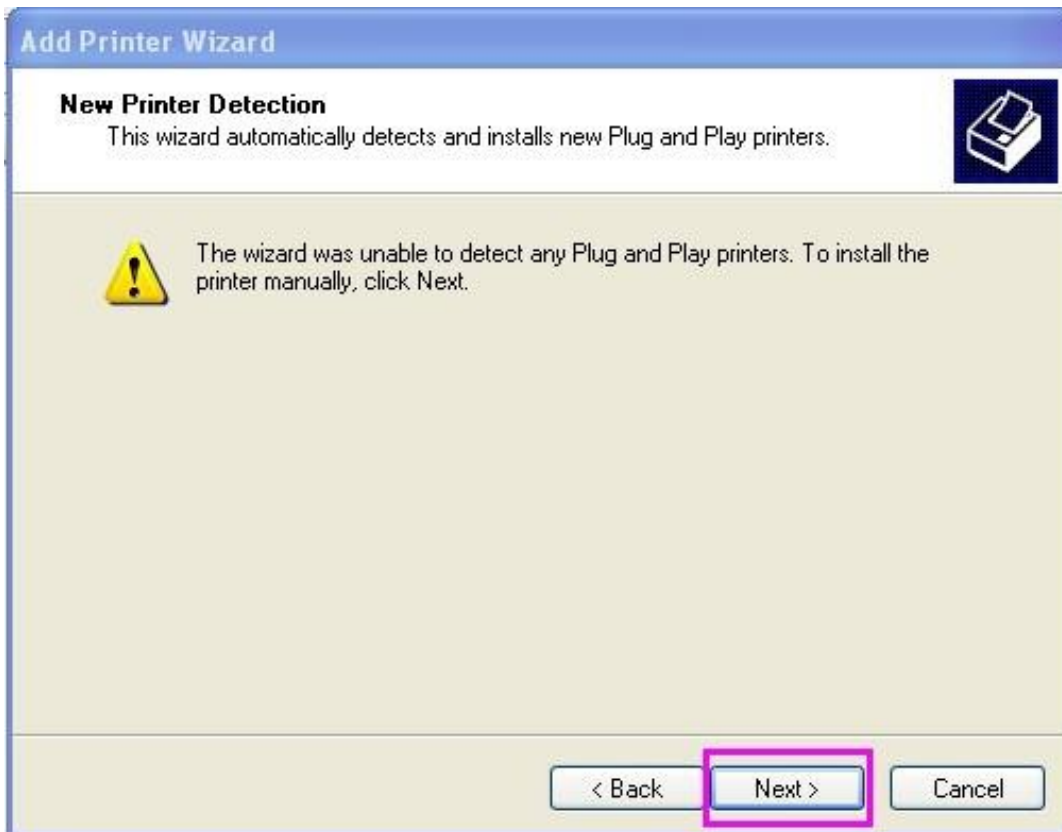
Step 4

Choose **Local printer attached to this computer**, then click **Next** to continue.



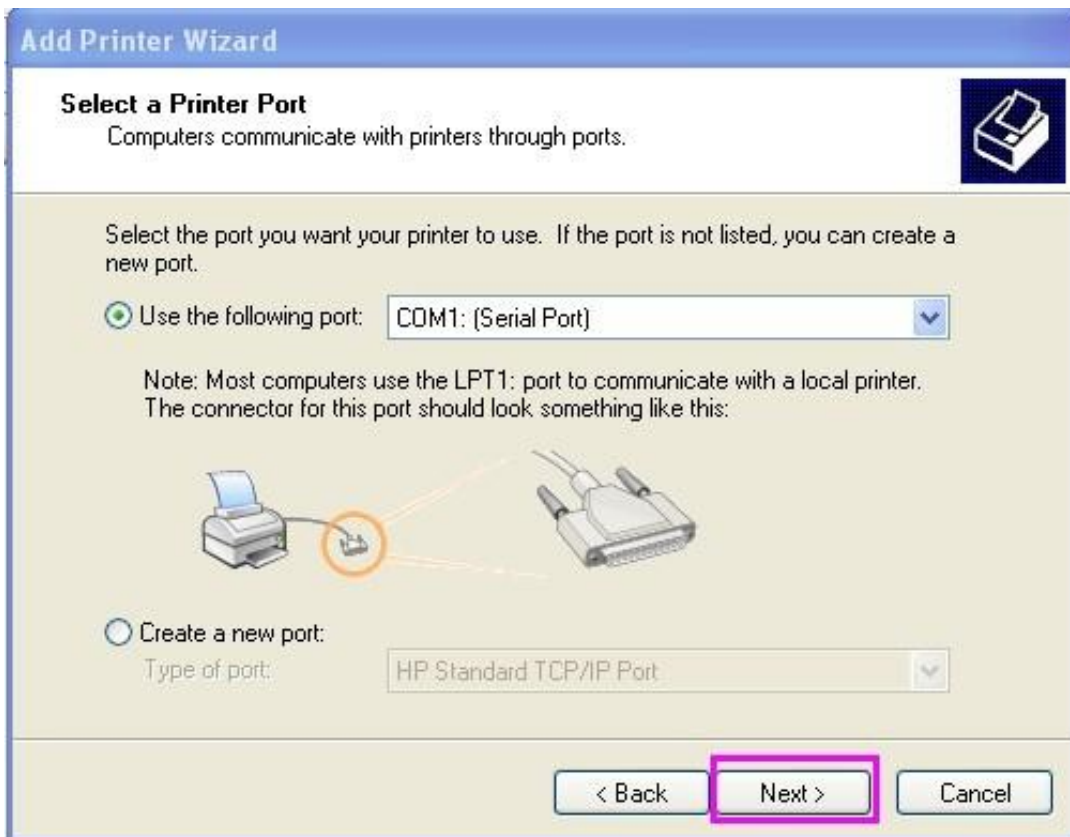
Step 5

Click **Next** to continue.



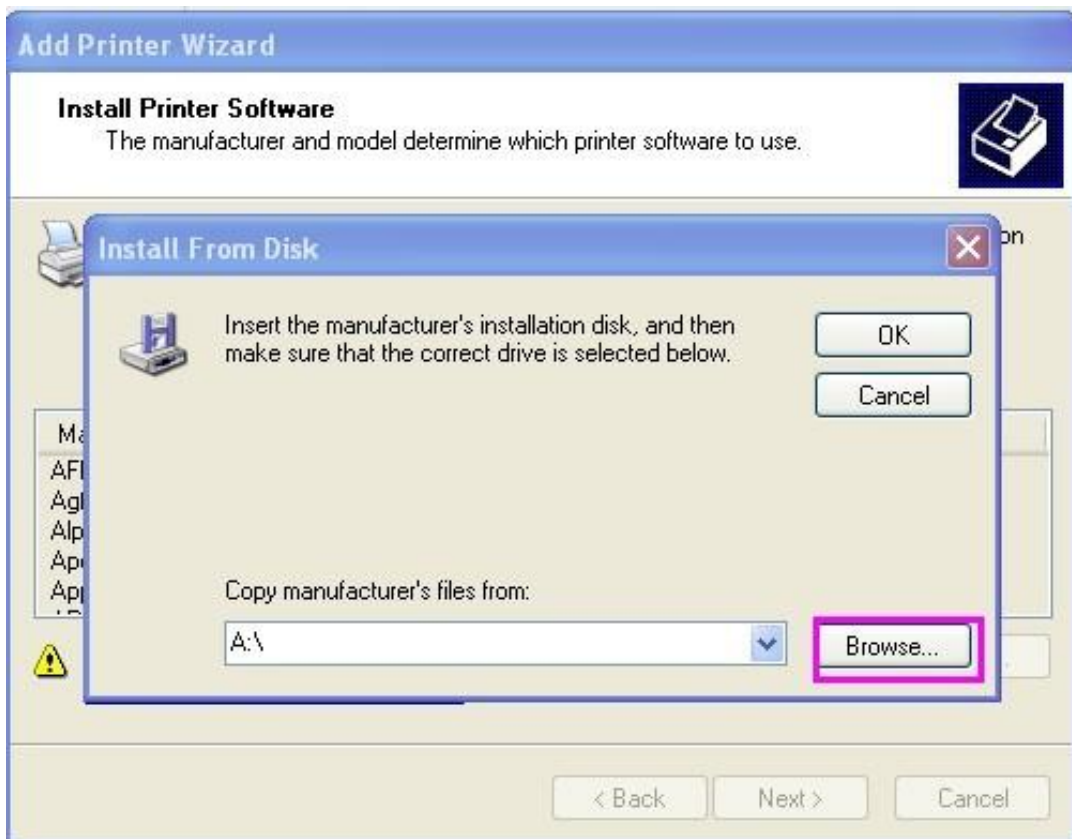
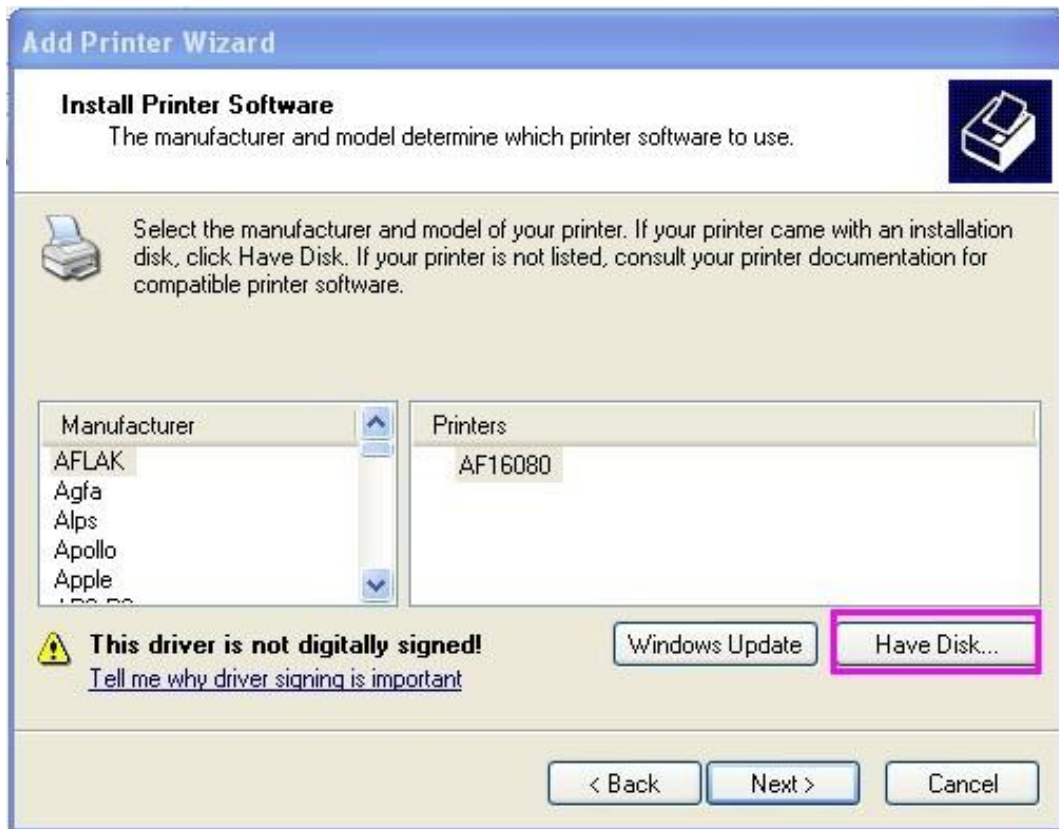
Step 6

Select correct **Printer port**. (Serial port, or USB port, or Create a new port.)



Step 7

Click **Have Disk...** and **Browse**, to find out the driver file.

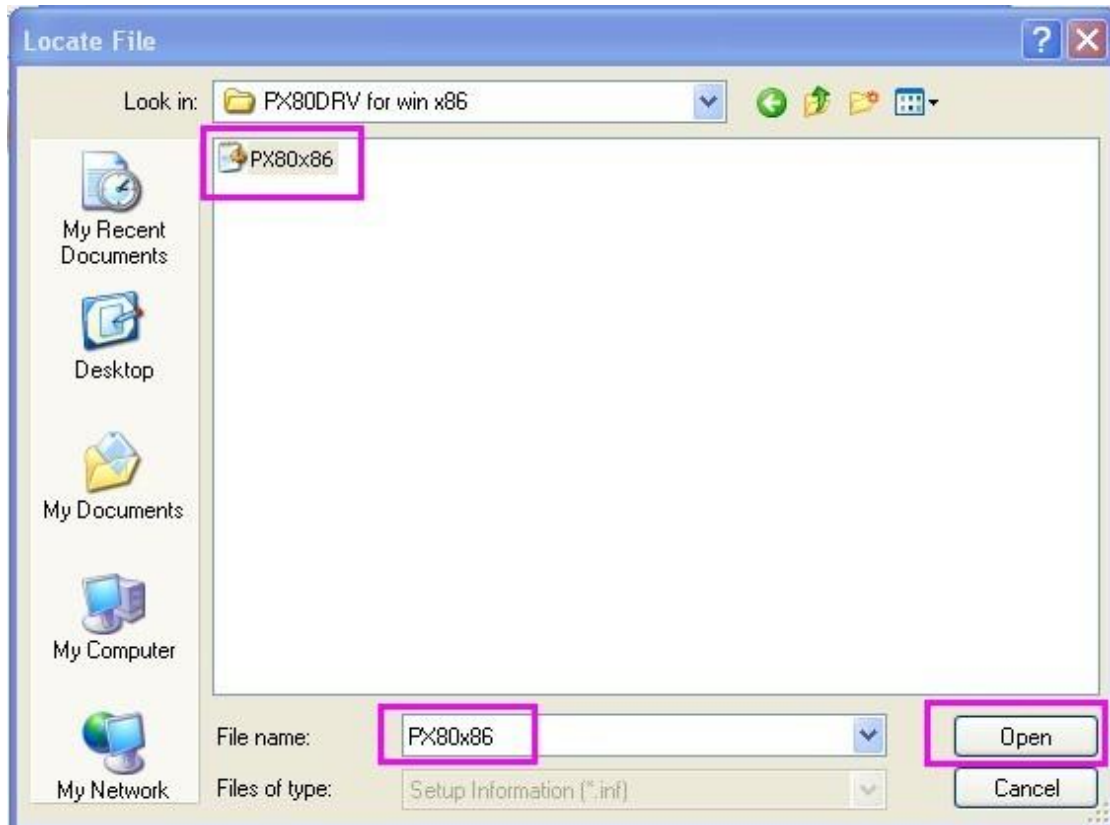


Step 8

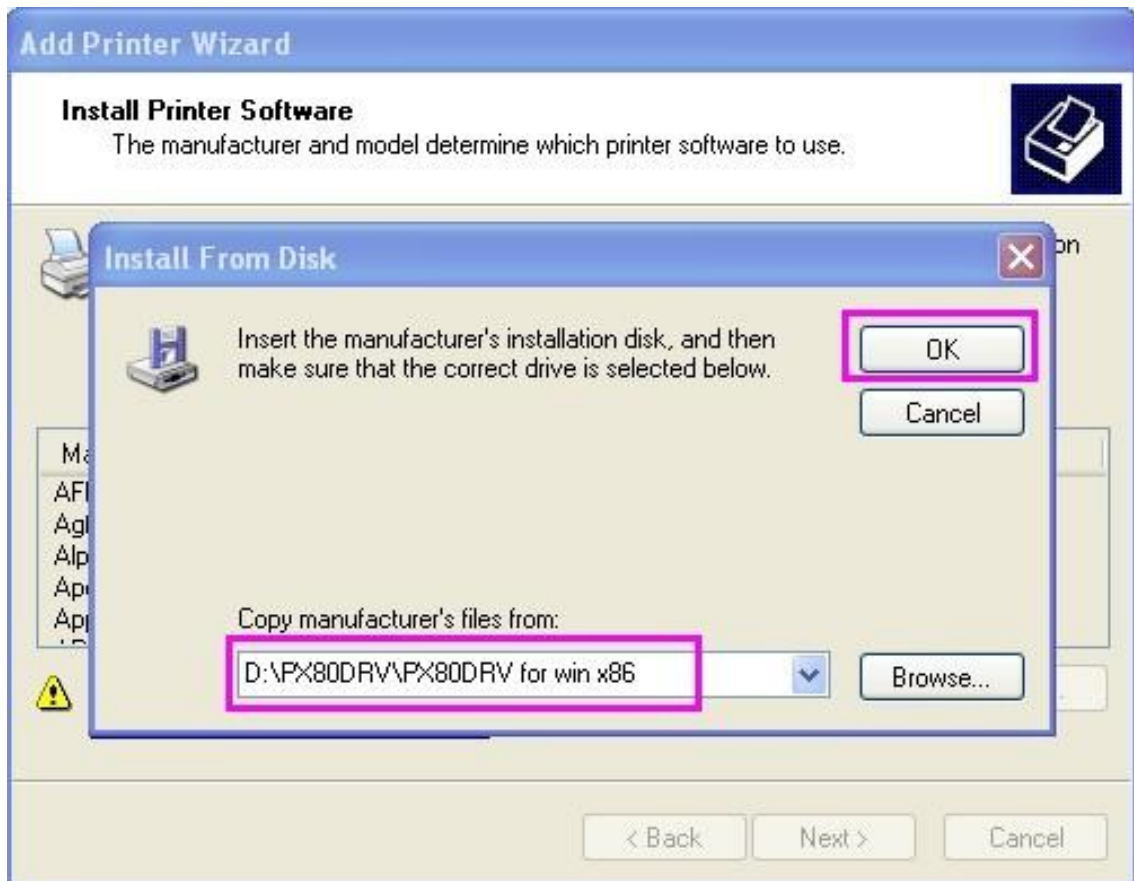
According to Step 1, printer driver file has been kept in disk D.

if your operation system is for x86, you can select the folder **PX80DRV for win x86**;

if your operation system is for x64, you can select the folder **PXDRV for win x64**.

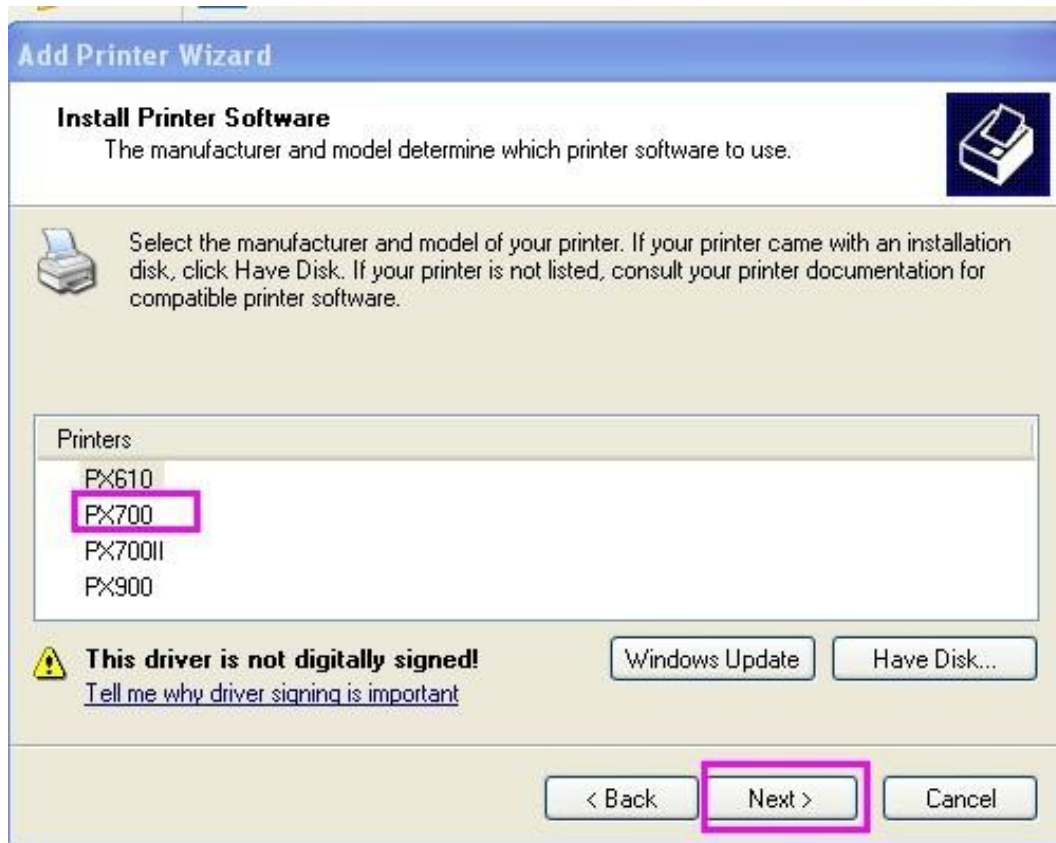


After **Open**, you will find below dialog box,click **OK** to continue.

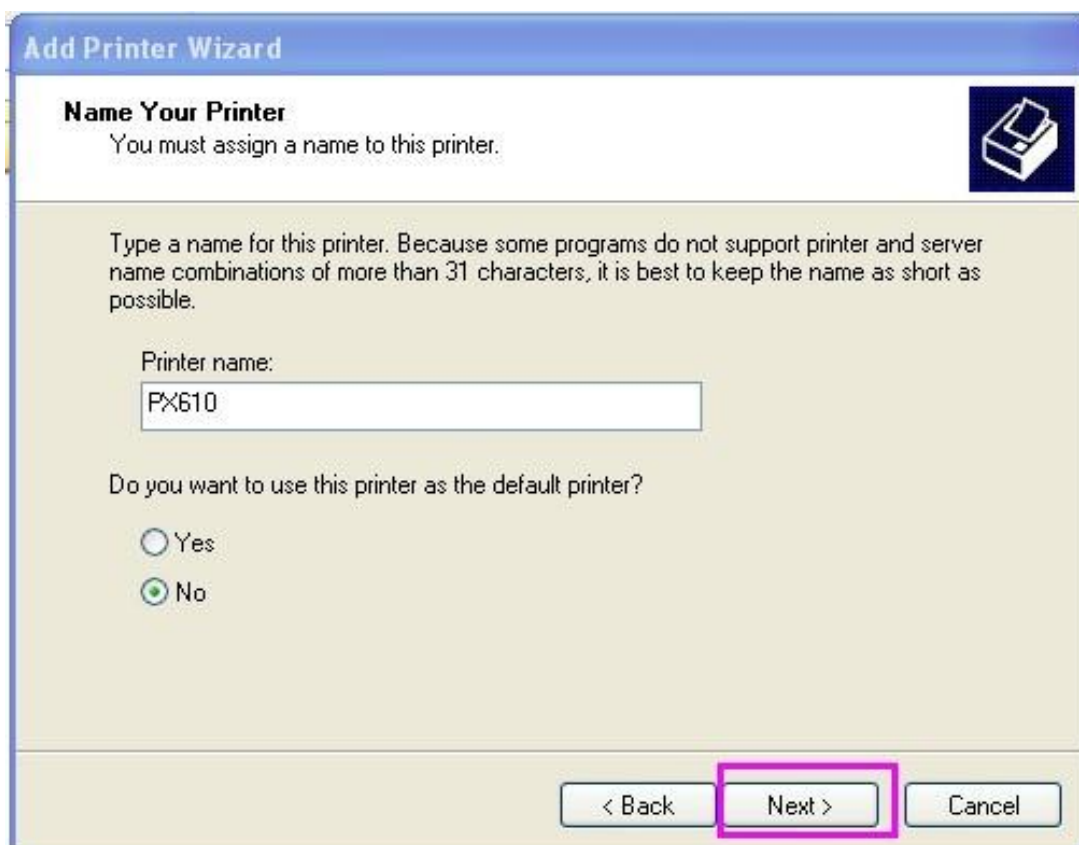


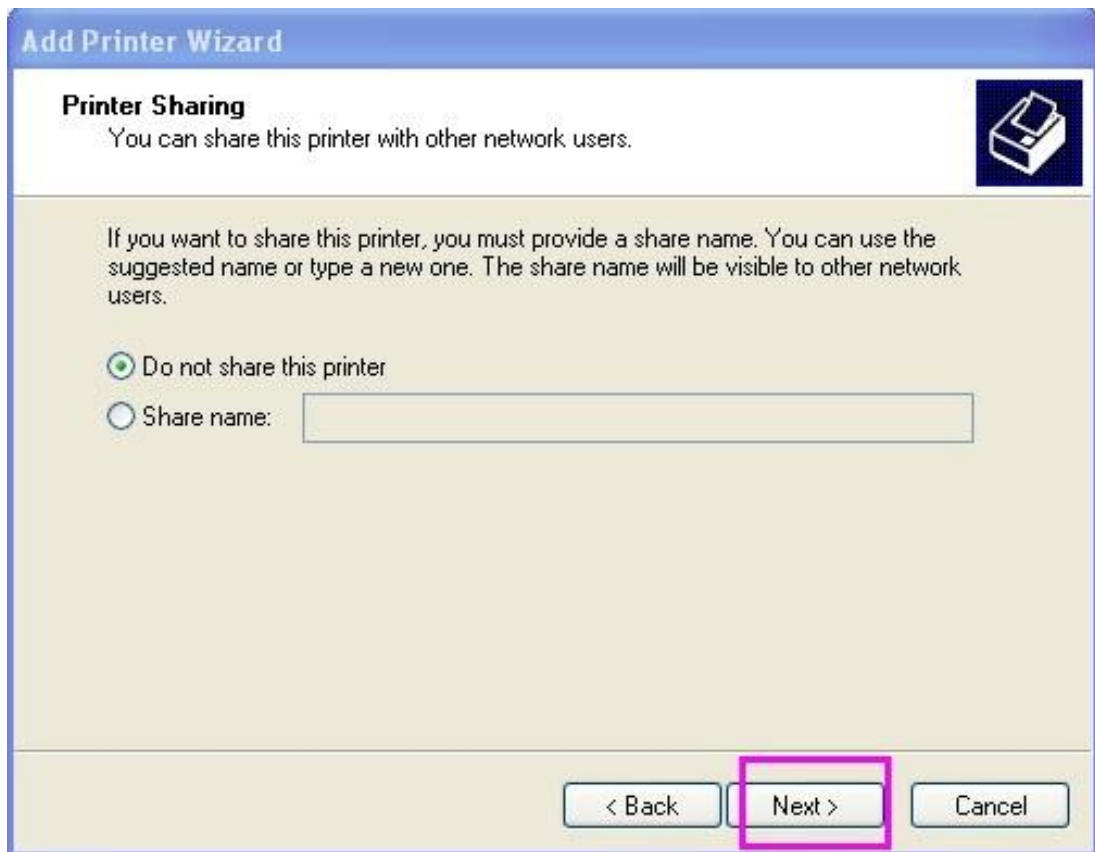
Step 9

Here we come to below dialog box, please choose **your printer model name** (*PX610, or PX700, or PX700II, or PX900*), and click **Next** to continue.



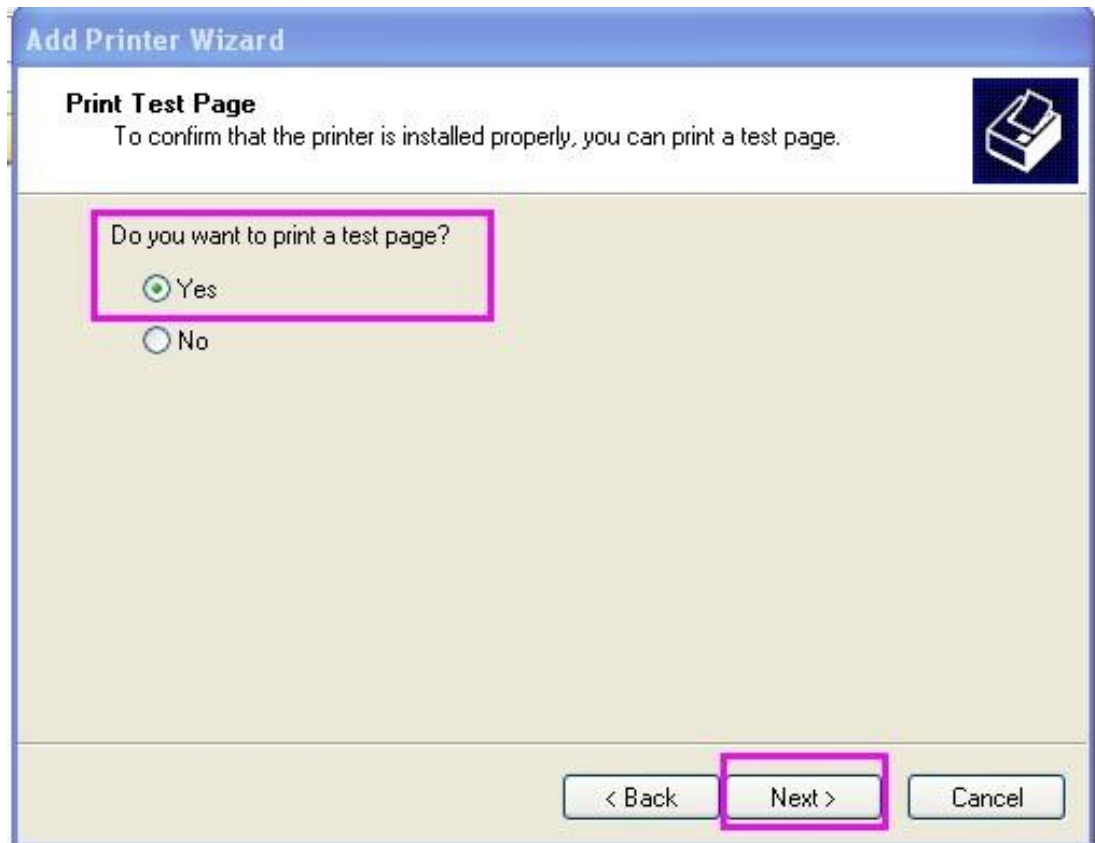
Here we choose **PX610** and click **Next** to continue.





Step10

Here we can select **Yes** to print a test page. Click **Next** to continue.



Step 11

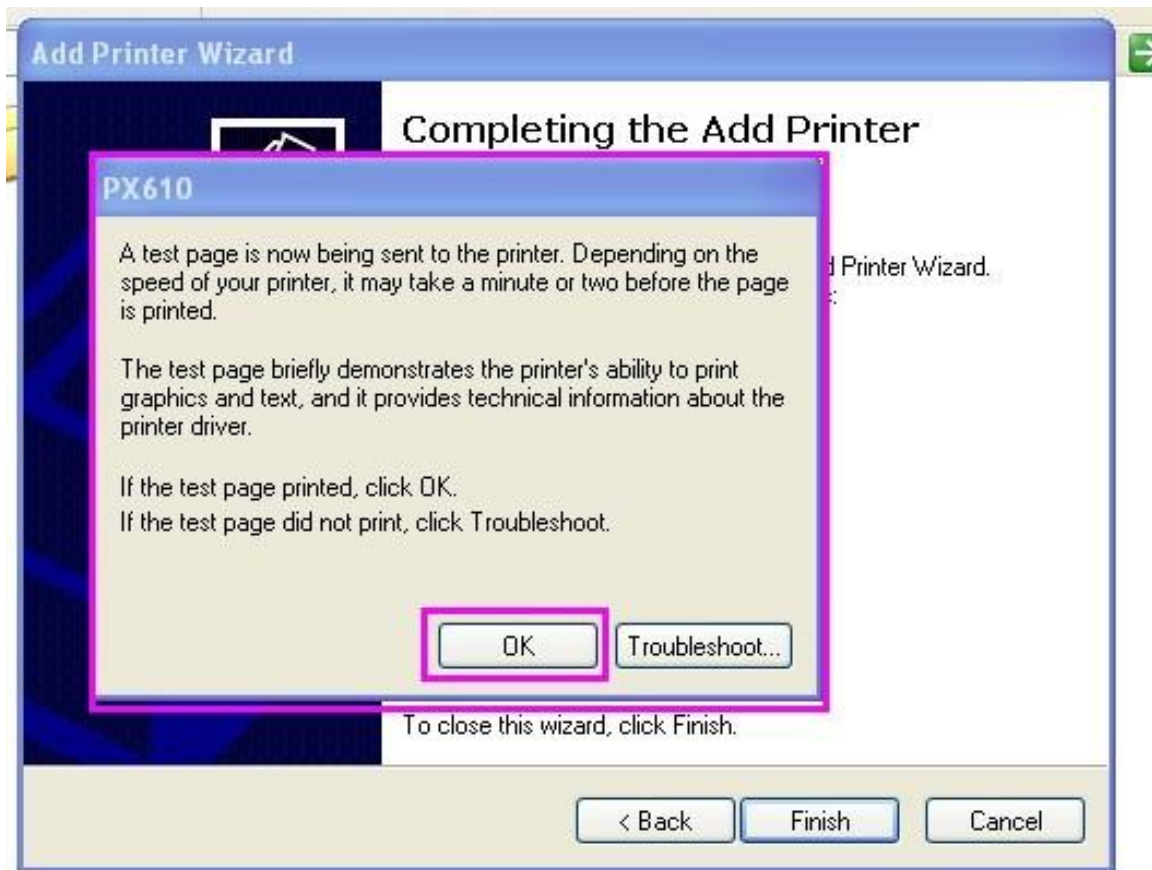
Click **Finish** and **Continue anyway** to continue.



Step 12

Turn on the printer, and then check if the test page printed or not; if yes, click OK, and your printer driver has been successfully installed.

* If not, please double check if you have selected the correct printer port.



Thanks for choosing Nexa printer!