

## OPOS DRIVER V1.0.14 – How to use the demo tool

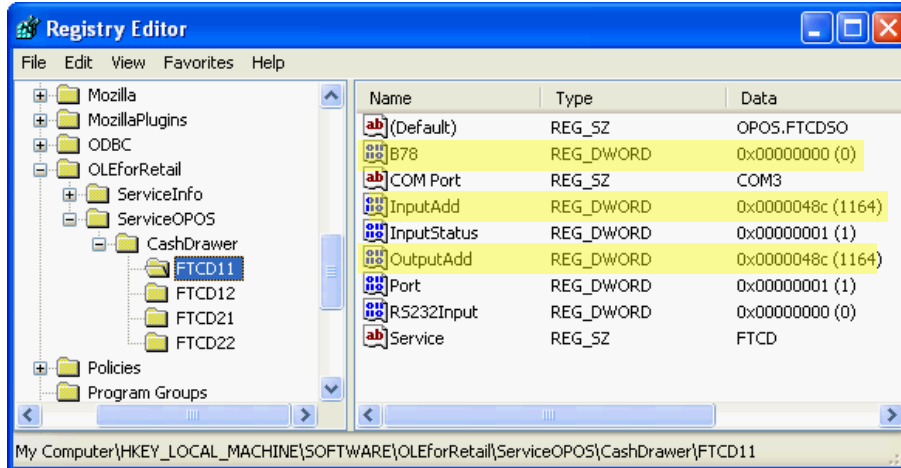
1. Install the OPOS CCO and then the OPOS driver.
2. Open the Registry, go to

`HKEY_LOCAL_MACHINE\SOFTWARE\OLEforRetail\ServiceOPOS\CashDrawer\FTCD11`  
and check that the following values are set as correctly:

**B78=0**

**InputAdd=OutputAdd=48c**

(see note 1 below for B78 system board)



### Note 1:

Set to B78=1 for B78 system board

Set InputAdd=OutputAdd to 4b8 for B78 system board

### Note 2:

The OPOS driver supports up to two cash drawer connectors, with each cash drawer connector supporting up to two cash drawers. Most POS systems have only one cash drawer connector.

The registry keys FTCD11 and FTCD21 control the two cash drawers on the first connector.

FTCD12 and FTCD22 control the two cash drawers on the second connector.

If you have only one cash drawer, use FTCD11.

3. Start the OPOS Cash Drawer Demo Tool. Click on **Open Service, Claim CD, Enabled CD**. You should get the status as shown below:

OPOS Cash Drawer Demo Tool V1.1.3

Status Value

BinaryConversion : 0	ResultCode : 0	CapPowerReporting : 0
Claimed : true	ResultCodeExtended : 0	PowerNotify : 0
DeviceEnabled : false	State : 2	PowerState : 2000
FreezeEvents : false	CapStatus : true	ReturnValue : 0
DrawerOpened : false	CapStatusMultiDrawerDetect : 0	OpenResult : 0

CheckHealthText : Not Executed

DeviceDescription : OPOS Cash Drawer1

DeviceName : None

ServiceObjectDescription : OPOS Cash Drawer Service Object

ServiceObjectVersion : 1003000

ControlObjectDescription : OPOS CashDrawer Control 1.6.000 [Public, by CRM/RCS-Dayton]

ControlObjectVersion : 1006000

Cash Drawer Device : FTCD11

Open Service Enabled CD Check Health INTERNAL Wait for CD Close

Close Service Disbale CD

Claim CD Freeze Events Open Drawer

Release CD TimeOut 1000 ms Unfreeze Events

Beep Timeout 5000

Beep Frequency 500

BeepDuration 100

BeepDelay 1000

4. Select **Interactive**, and click on **Check Health**. The Check Health status window will open with **Status: Drawer Closed**

OPOS Cash Drawer Demo Tool V1.1.3

Status Value

BinaryConversion : 0	ResultCode : 0	CapPowerReporting : 0
Claimed : true	ResultCodeExtended : 0	PowerNotify : 0
DeviceEnabled : false	State : 2	PowerState : 2000
FreezeEvents : false	CapStatus : true	ReturnValue : 0
DrawerOpened : false	CapStatusMultiDrawerDetect : 0	

CheckHealthText : Not Executed

DeviceDescription : OPOS Cash Drawer1

DeviceName : None

ServiceObjectDescription : OPOS Cash Drawer Service Object

ServiceObjectVersion : 1003000

ControlObjectDescription : OPOS CashDrawer Control 1.6.000 [Public, by CRM/RCS-Dayton]

ControlObjectVersion : 1006000

Cash Drawer Device : FTCD11

Open Service Enabled CD Check Health INTERACTIVE Wait for CD Close

Close Service Disbale CD

Claim CD Freeze Events Open Drawer

Release CD TimeOut 1000 ms Unfreeze Events

Beep Timeout 5000

Beep Frequency 500

BeepDuration 100

BeepDelay 1000

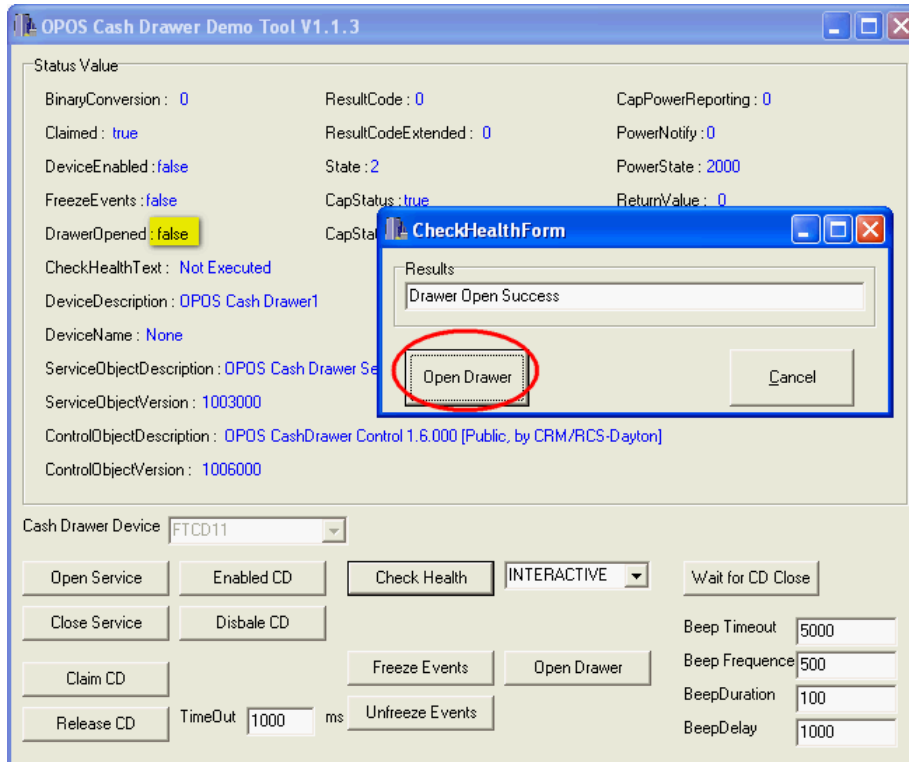
CheckHealthForm

Results

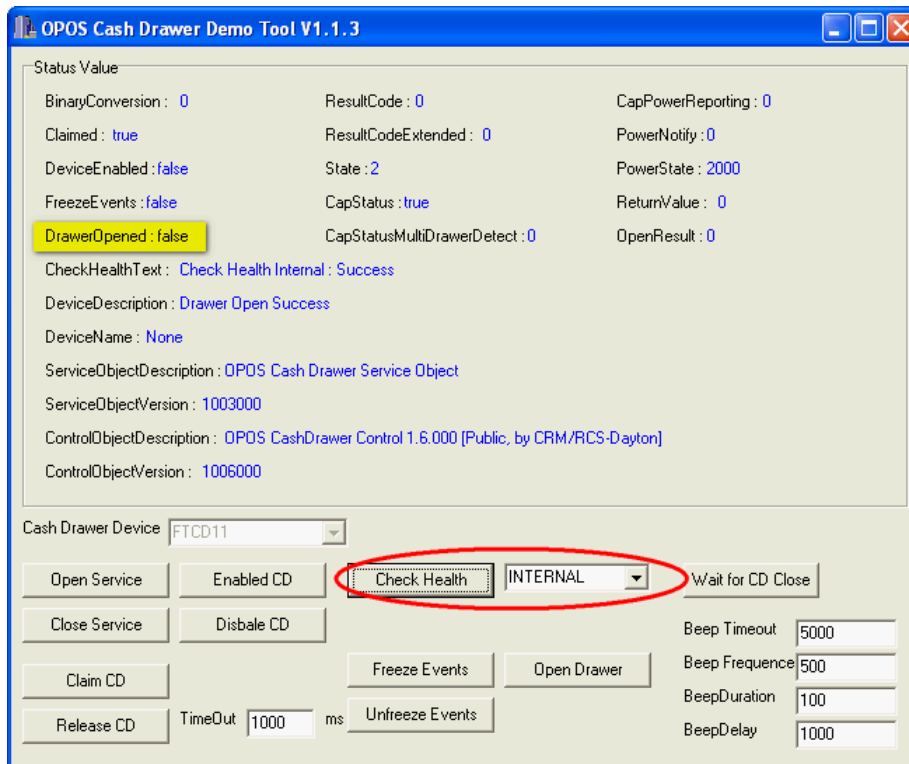
Status: Drawer Closed

Open Drawer Cancel

5. Click **Open Drawer**. The cash drawer will open, but the status in the main Window is **NOT** updated as it does not have the focus. If you close the cash drawer now, the status in the Check Health status windows will **NOT** be updated. Close the status window by clicking on **Cancel**

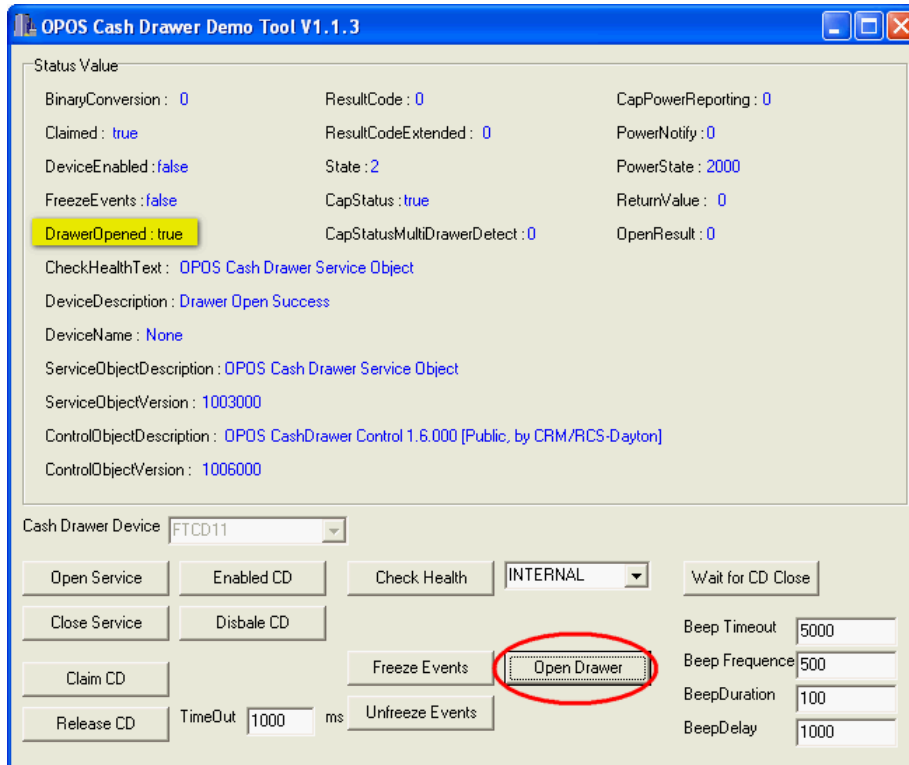


6. To check whether the cash drawer status is read correctly,
- Close the drawer
  - Select **INTERNAL** (health check) and click on the **Check Health** button.
- The **DrawerOpened** status should become **false**



7. Another way to check that the closing of the drawer is correctly detected is as follows:

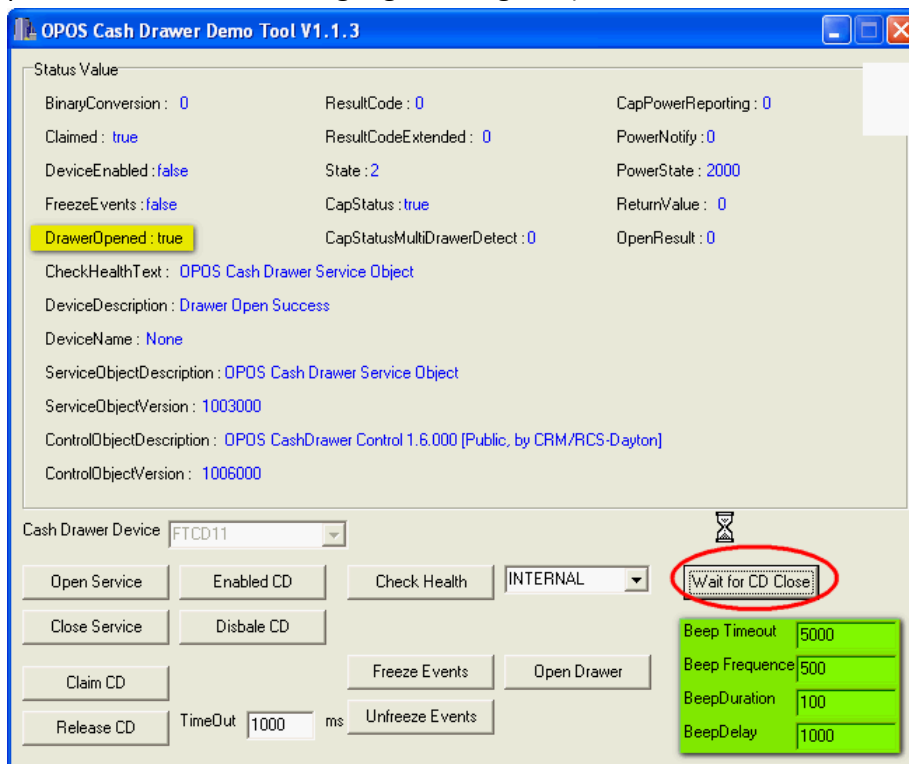
- Click on **Open Drawer** and verify that the **DrawerOpened** status is **true**



8. With the drawer open, click on the **Wait for CD Close** button.

The **DrawerOpened** status is **true**.

After 5 seconds, the terminal will start to beep (you can modify the time delay by changing the parameters in the area highlighted in green).



9. Now close the drawer. The **DrawerOpened** status should change to **false**

The screenshot shows the 'OPOS Cash Drawer Demo Tool V1.1.3' window. The 'Status Value' section displays various status parameters. The 'DrawerOpened' status is highlighted in yellow and set to 'false'. Below this, there are several control buttons and input fields for managing the cash drawer device.

Status Value		
BinaryConversion : 0	ResultCode : 0	CapPowerReporting : 0
Claimed : true	ResultCodeExtended : 0	PowerNotify : 0
DeviceEnabled : false	State : 2	PowerState : 2000
FreezeEvents : false	CapStatus : true	ReturnValue : 0
<b>DrawerOpened : false</b>	CapStatusMultiDrawerDetect : 0	OpenResult : 0
CheckHealthText : OPOS Cash Drawer Service Object		
DeviceDescription : Drawer Open Success		
DeviceName : None		
ServiceObjectDescription : OPOS Cash Drawer Service Object		
ServiceObjectVersion : 1003000		
ControlObjectDescription : OPOS CashDrawer Control 1.6.000 [Public, by CRM/RCS-Dayton]		
ControlObjectVersion : 1006000		

Cash Drawer Device: FTCD11

Buttons: Open Service, Enabled CD, Check Health, INTERNAL (dropdown), Wait for CD Close, Close Service, Disable CD, Claim CD, Freeze Events, Open Drawer, Release CD, TimeOut: 1000 ms, Unfreeze Events.

Beep Settings: Beep Timeout: 5000, Beep Frequency: 500, BeepDuration: 100, BeepDelay: 1000.