

NEXA PX-700III

Configuring the USB as a Virtual Serial Port

A USB virtual COM port is a software interface that enables applications to access a USB device as if it were a built-in serial port. Even though the PX700III does have a serial port few PC's still have them and even on POS terminals that have them it is often more convenient to use a usb cable.

By default the USB port on the PX-700III is configured as a USB printer port and requires a printer driver in windows to print to it. The following instructions explain how to change this to VCOM.

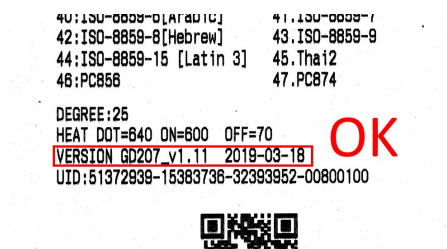
Check Firmware version

Please print the self test – Hold the feed button while switching on the power, release the feed button once it starts printing.

The version information is on the second line from the bottom.

GD207_V1.11 2019-03-18 or later, supports both of USB and USB VCOM Interfaces – Skip to section 2. Changing USB to VCOM

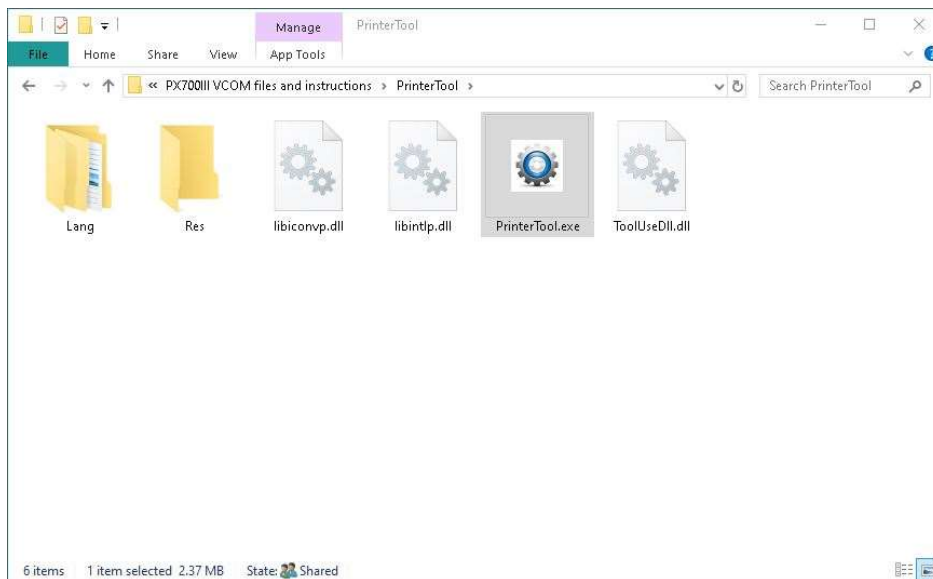
Earlier version only Supports USB interface – Continue to section 1. Updating firmware section



1. Updating firmware

For Printer with firmware earlier than **GD207_V1.11 2019-3-18** you have to upgrade the PX700III firmware if you wish to use the USB in VCOM mode

Goto the location you extracted the update files. Open the “PrinterTool” directory. Double click “PrinterTool.exe”



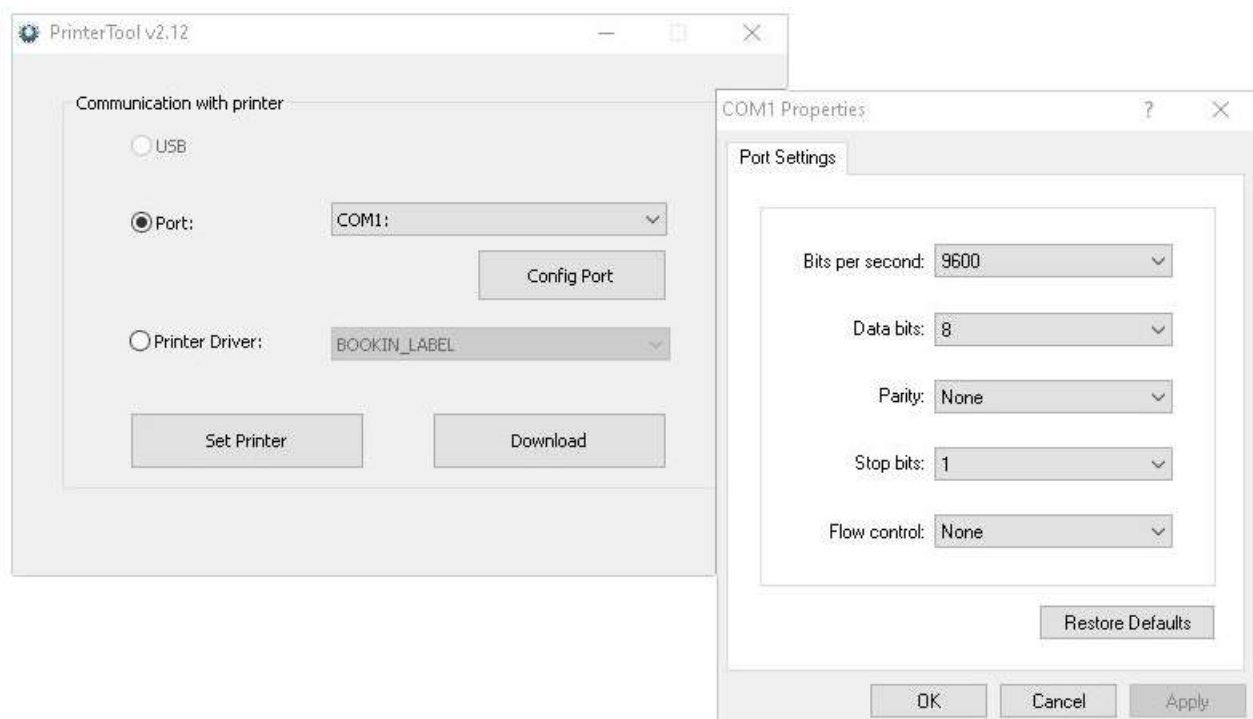
On the first window select the port you currently have the printer connected to

USB – Select USB and click Download (recommended)

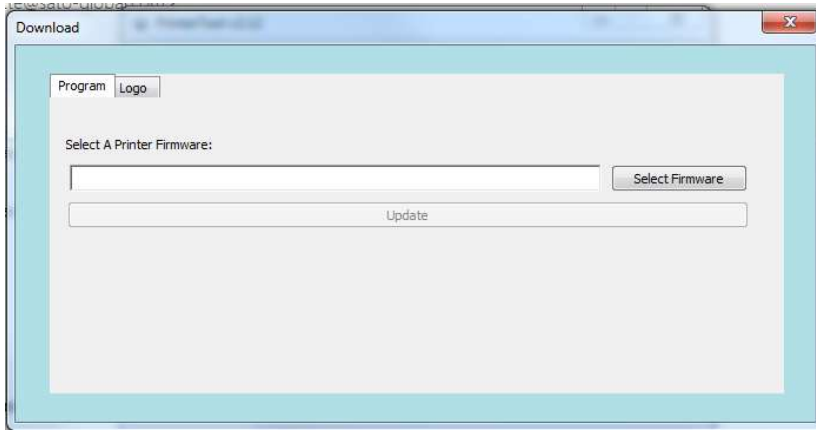
Serial – Select Port, Select the com port number from the drop down and click Config Port button. Make the setting match serial setting on the test print and click OK. Then click Download.

Ethernet – Select Port, Select the Ethernet from the drop down and click Config Port button. Make the setting match IP address on the test print and click OK. Then click Download.

Printer Driver – Select Printer driver. Select the PX700III driver from the drop down and click Download.



Click the select firmware button.



Goto the location you extracted the update files. Select the file named
**"SP01_USE_GD207(600,70,640)_PageMode_NO_PNE_V1.11_COLUMN40_USB_AS_COM_O
R_PRINT_20190318.bin"**

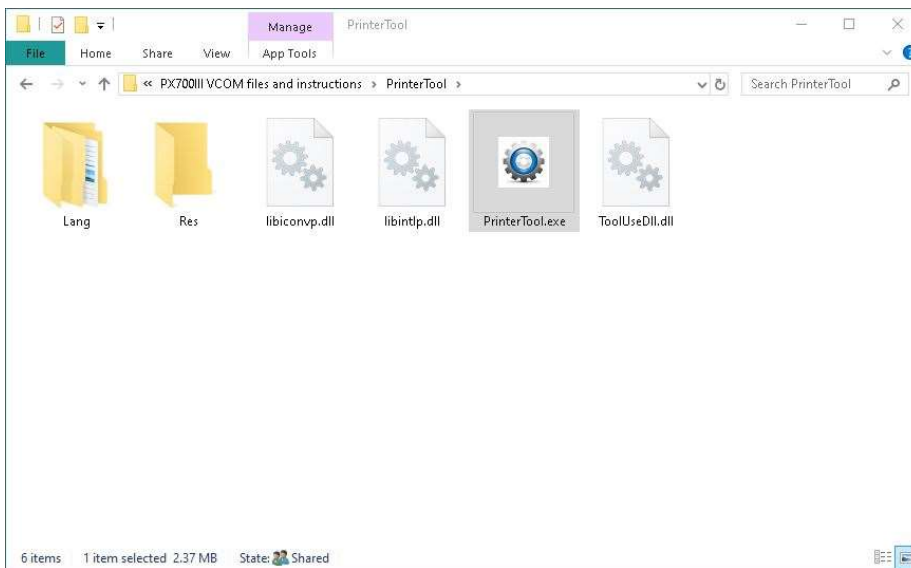
Then press "Update" and wait for the file to download.
The printer will print a confirmation and reset itself.

Receive Program Data OK!
Restart Printer Now!

After done the firmware update, please following procedure below to switch from USB to USB
VCOM and install VCOM driver.

2. Changing USB to VCOM

Goto the location you extracted the update files. Open the “PrinterTool” directory. Double click “PrinterTool.exe”



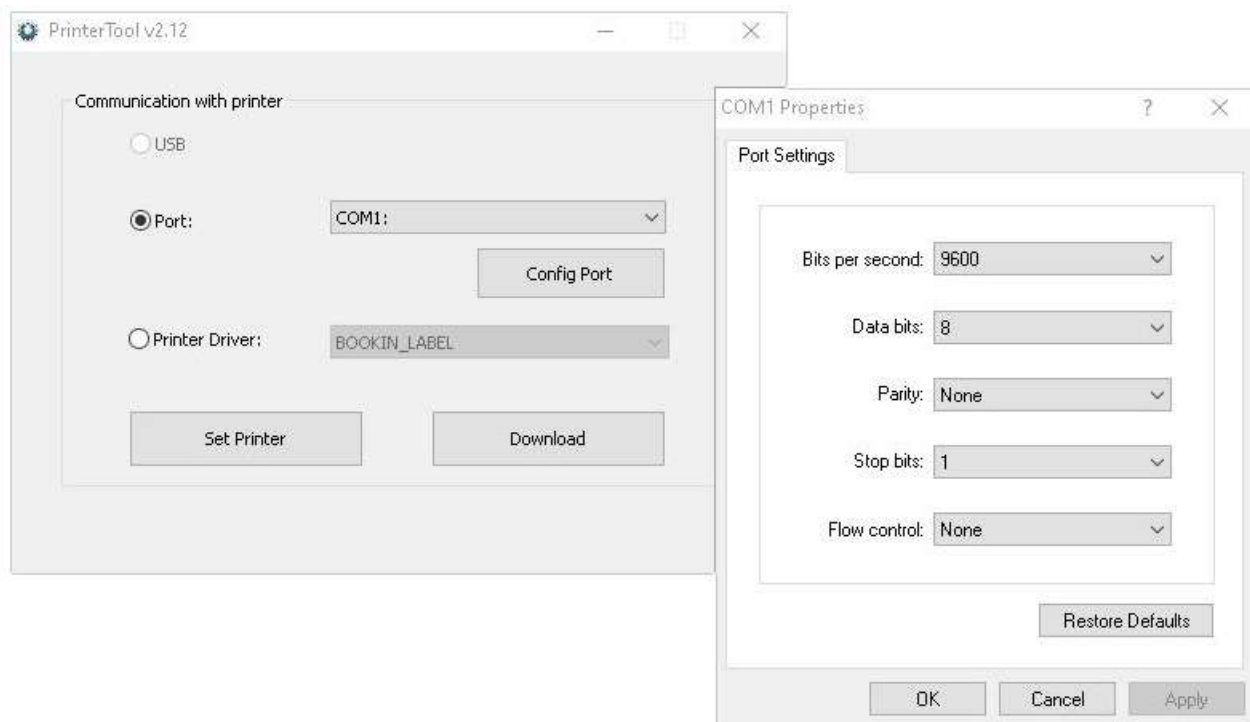
On the first window select the port you currently have the printer connected to

USB – Select USB and click Set Printer (recommended)

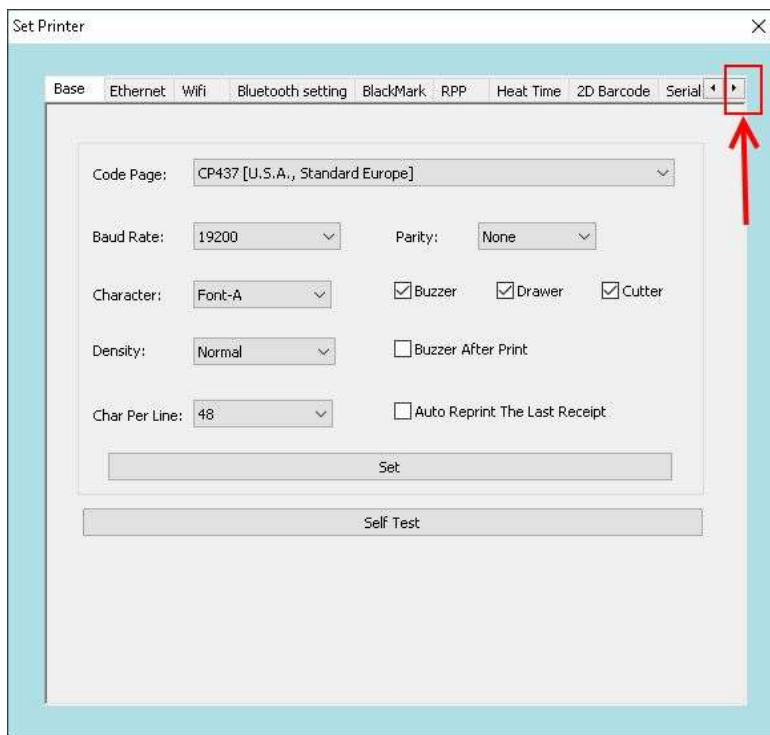
Serial – Select Port, Select the com port number from the drop down and click Config Port button. Make the setting match serial setting on the test print and click OK. Then click Set Printer.

Ethernet – Select Port, Select the Ethernet from the drop down and click Config Port button. Make the setting match IP address on the test print and click OK. Then click Set Printer.

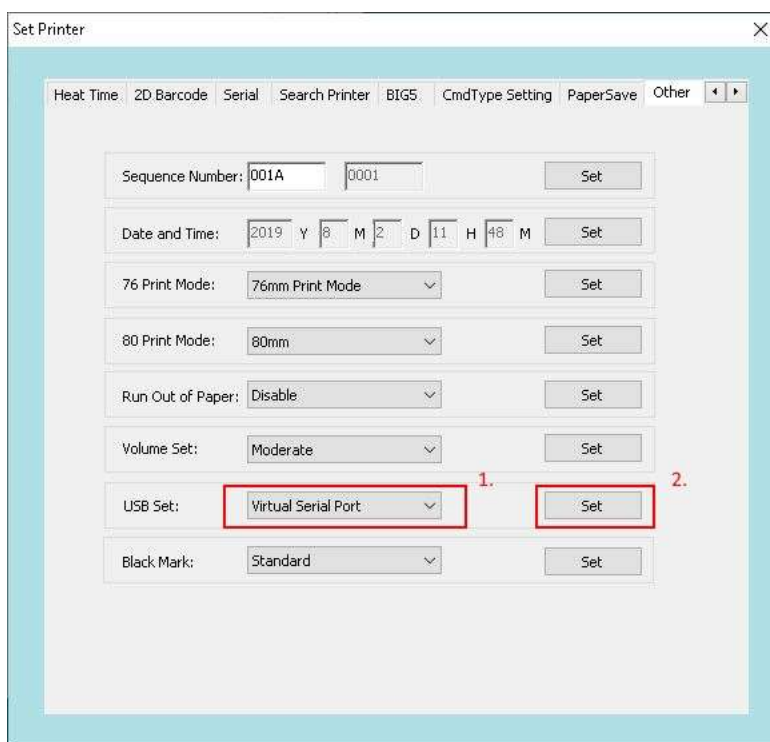
Printer Driver – Select Printer driver. Select the PX700III driver from the drop down and click Set Printer.



Click the right arrow on top until tab “other” is shown, click the “other” tab



At “USB set:” Select “Virtual Serial Port” then click the set button.



The printer will print a confirmation and reset itself. Now the printers USB port will be Virtual COM.

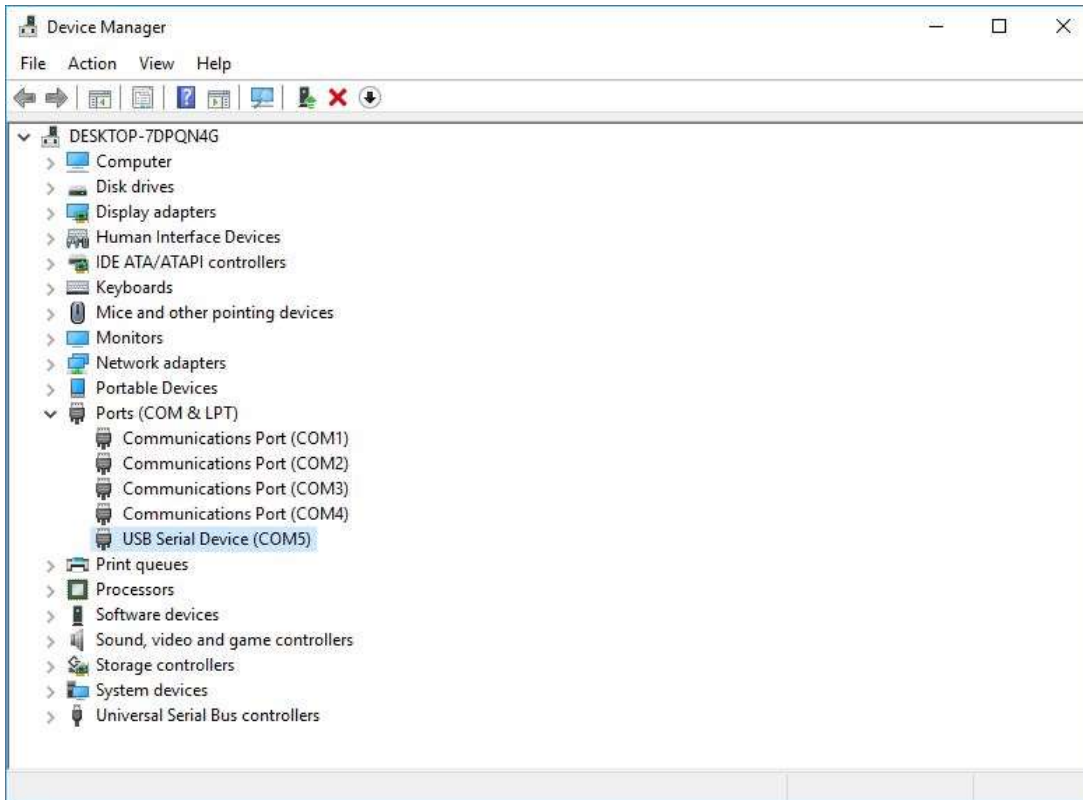
```

USB Mode is: Virtual Serial!
RESET PRINT....
  
```

Installing VCOM Driver

Windows may prompt you to install a driver. If so select Browse for driver. Goto the location you extracted the update files. Select the GD_Virtual_Com_Driver_2.0 directory. And click OK.

Open Device Manager by right clicking the windows button and selecting device manager. Under the ports heading check to see if it has installed correctly.



- If GD32 Virtual Com Port (COMX) is listed, the printer VCOM driver is installed and ready to use.
- If GD32 Virtual Com Port is listed with yellow question mark or exclamation mark, VCOM driver has not been installed. Or if it has a different name such as USB Serial device, the driver needs to be updated.

Update VCOM Driver

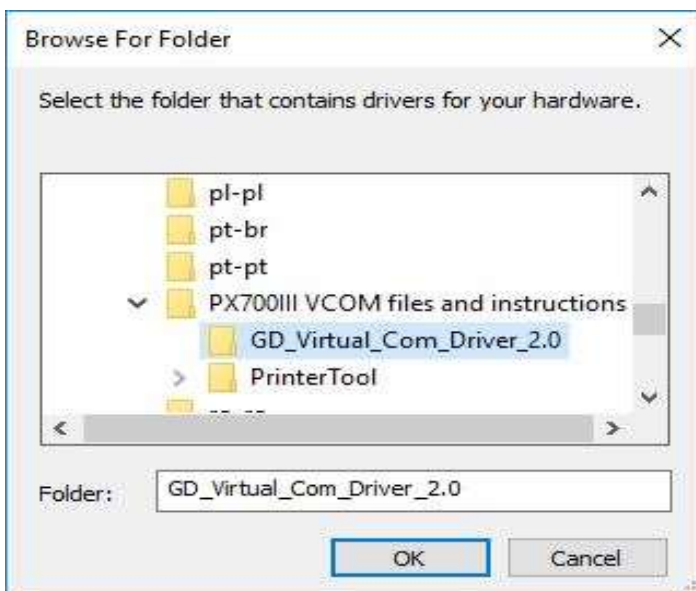
In Device Manager right click the Virtual Com Port and select to Update Driver

Or in Device Manager double click the Virtual Com Port select the driver tab in the properties window and click the Update Driver button.

Select browse my computer for driver software



Goto the location you extracted the update files. Open the “GD_Virtual_Com_Driver_2.0” directory. Click OK



Then click install



When it is finished you will see the following screen. Click close to finish.



Once VCOM driver is installed, Com port number will be assigned. Take note of this

