

80 Series Printer

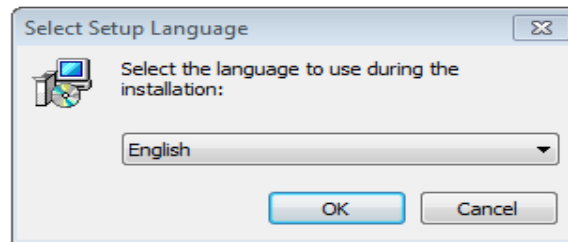
Driver Setup Manual

I. Windows Driver Installation



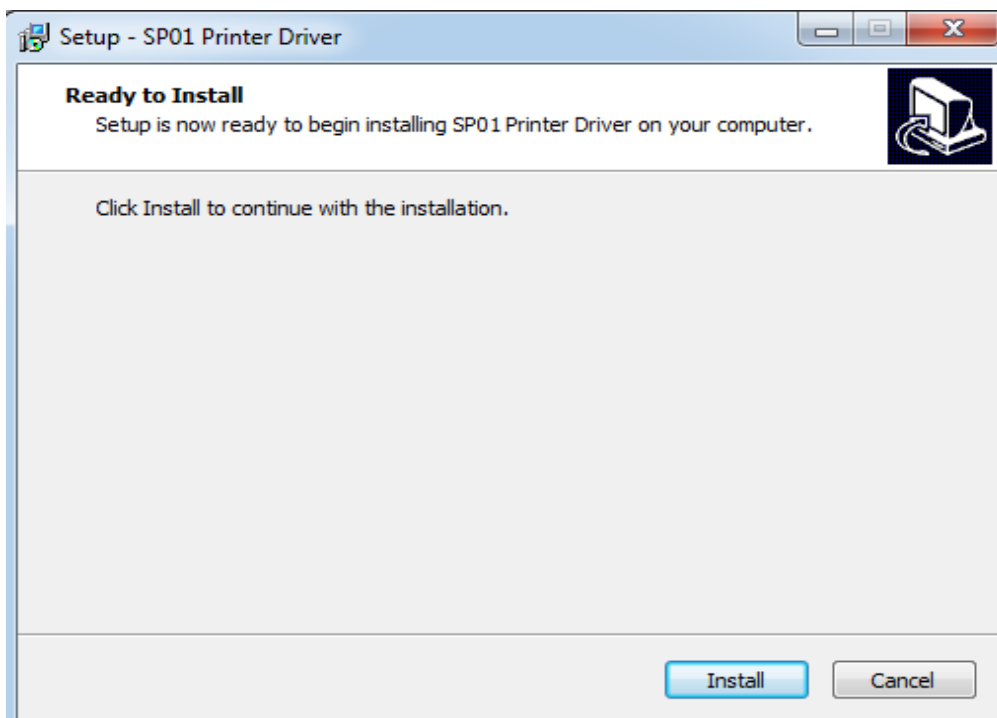
Double click the installation icon

Then, it will show as below picture:



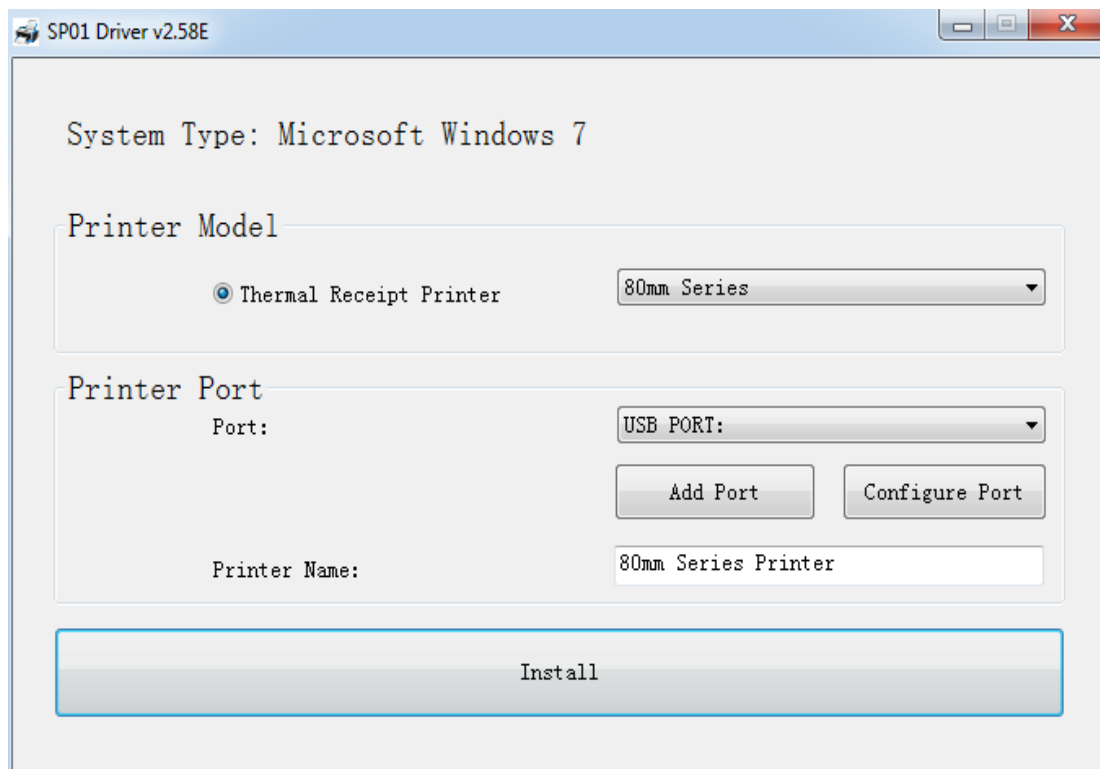
Select the language, then click "OK".

Then, it will show as below picture:

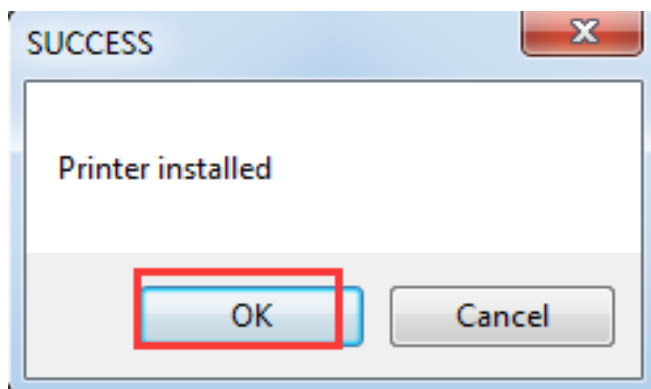


Then click "Install"

Then the pop-up dialog box as follows

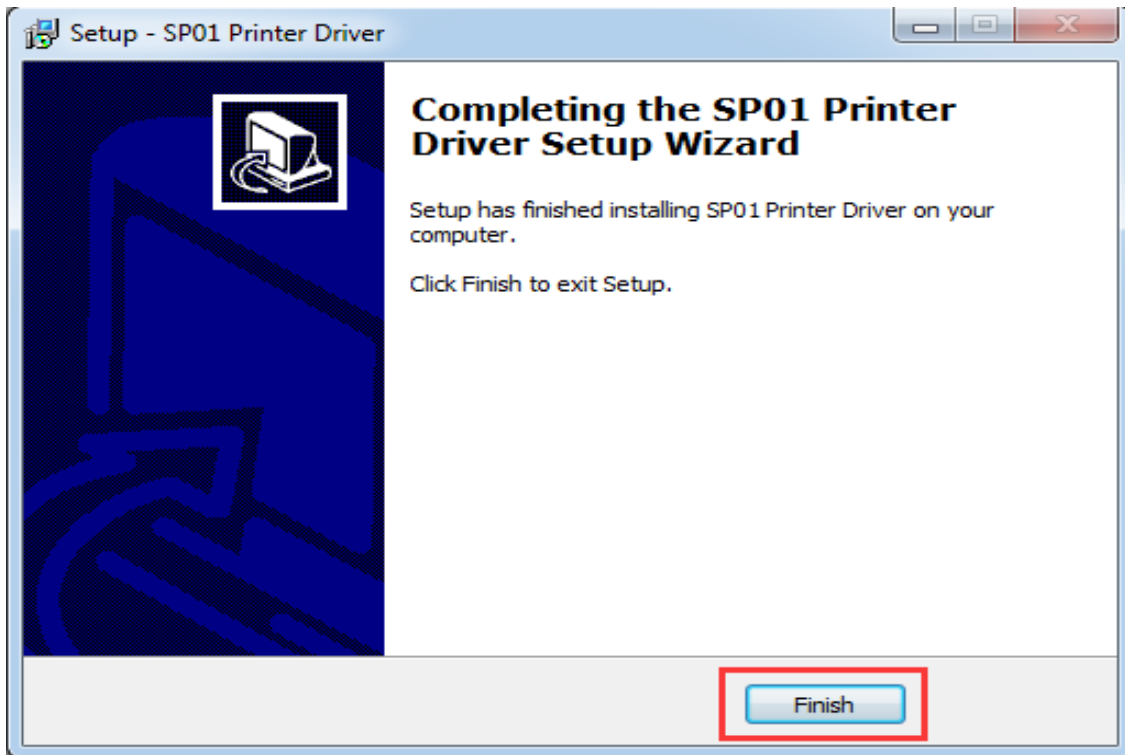


Click install to pop up the following dialog box



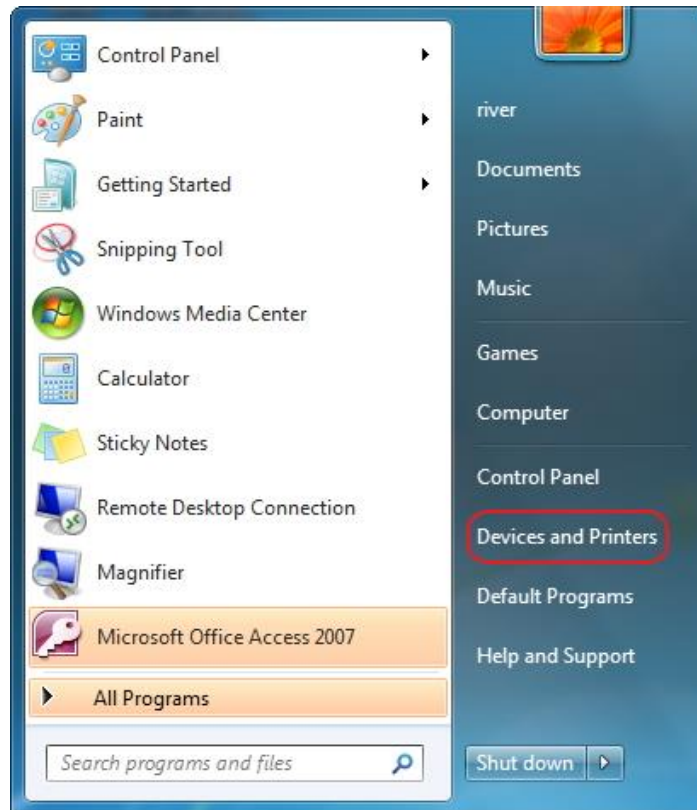
Click ok and then click exit

Finally, click finish (F).

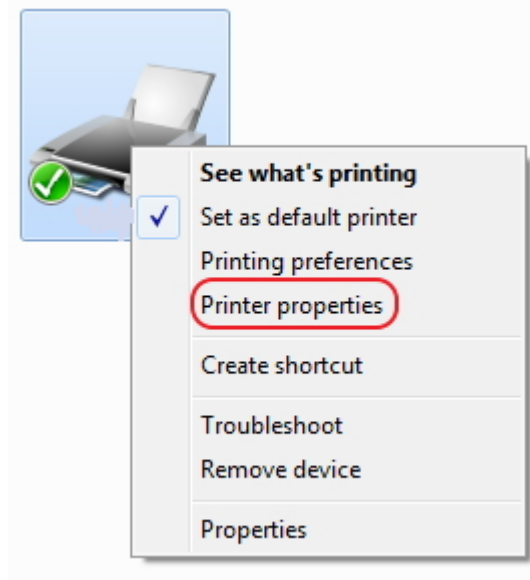


II. Printer Setup and Testing

2.1 Setup Printer Properties

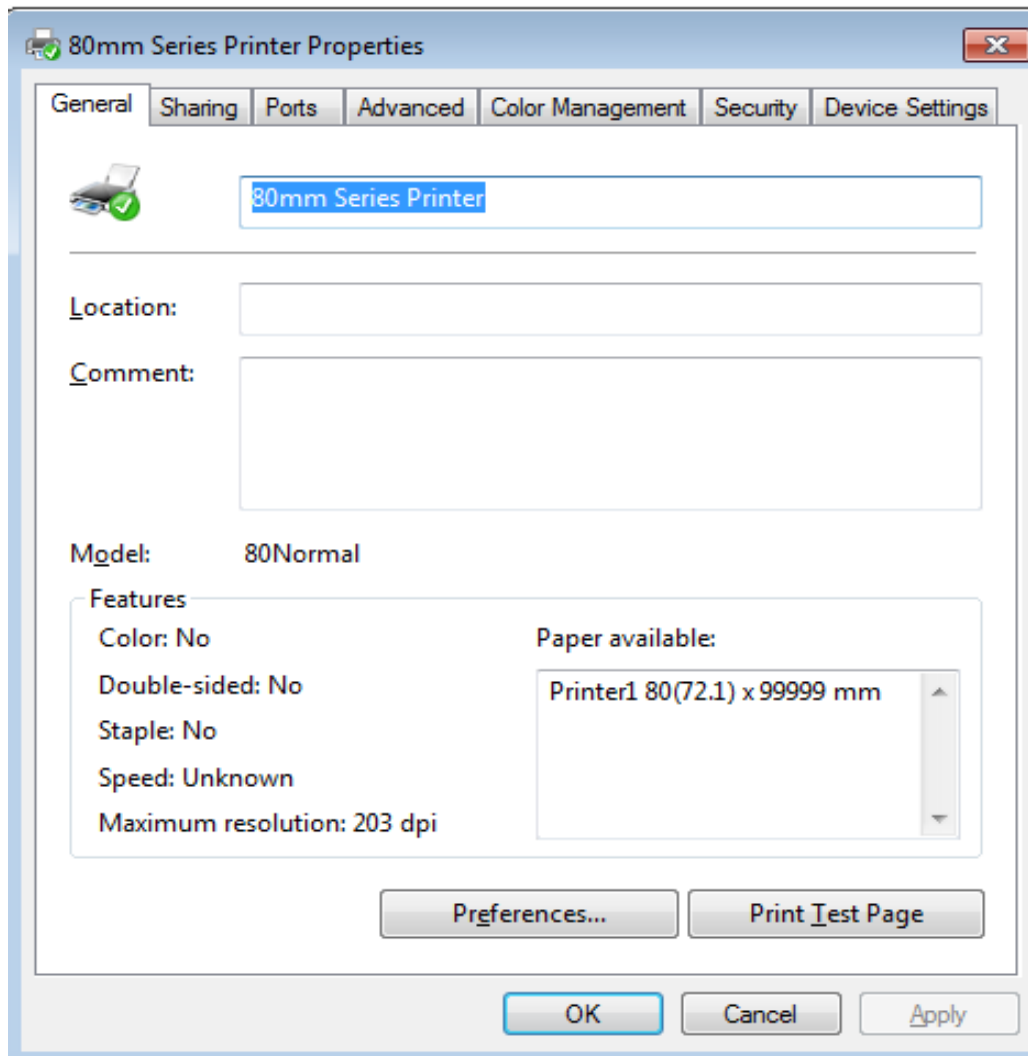


Click Start Menu, and then click “Devices and Printers”, just as above picture



Right-Click “80 Printer” and then click “Printer properties”

And then, it will show as below picture:

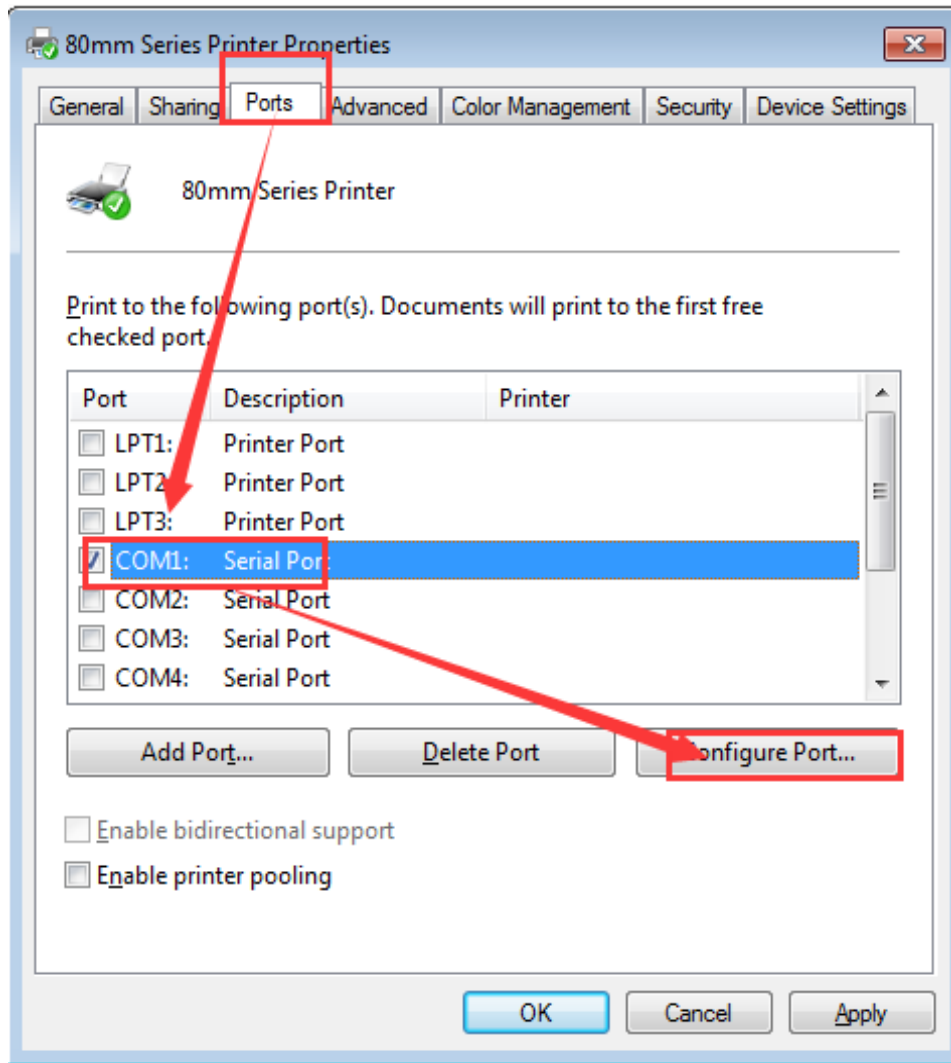


On 80 Printer Properties “General”, you could configure the printer communication port, such as Serial port, Parallel port and USB port. You also could set the paper specification, beeper etc.

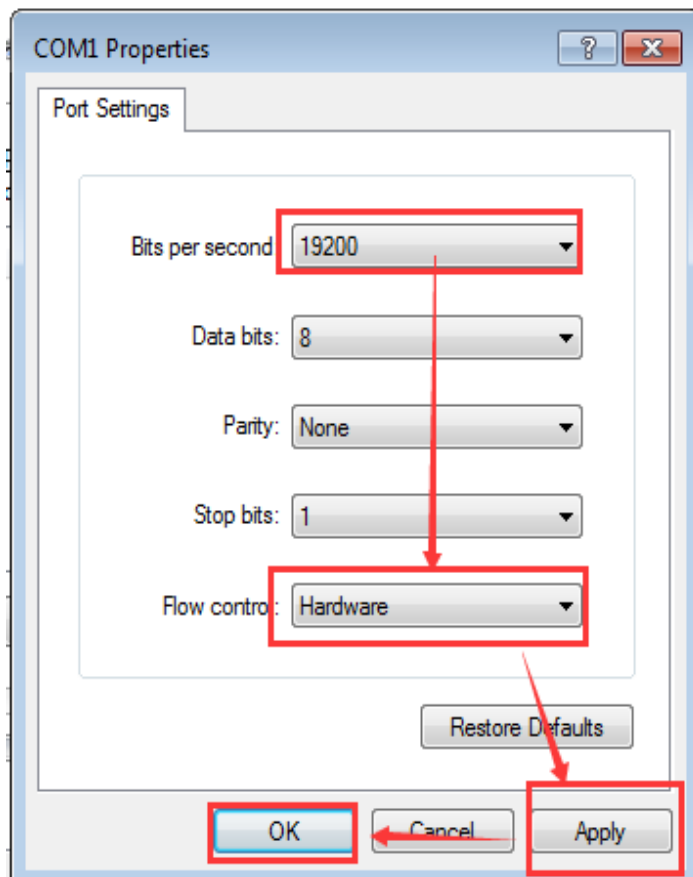
After all the setting, you could start to print the testing page.

2.2 Serial Port Configuration

On 80 Printer Properties “Ports”, you could configure the Serial Port to communicate printer to computer, see the below picture:



Select available computer COM port, such as "COM1" as the above picture, and then click "Configure Port" to set the detailed parameter.



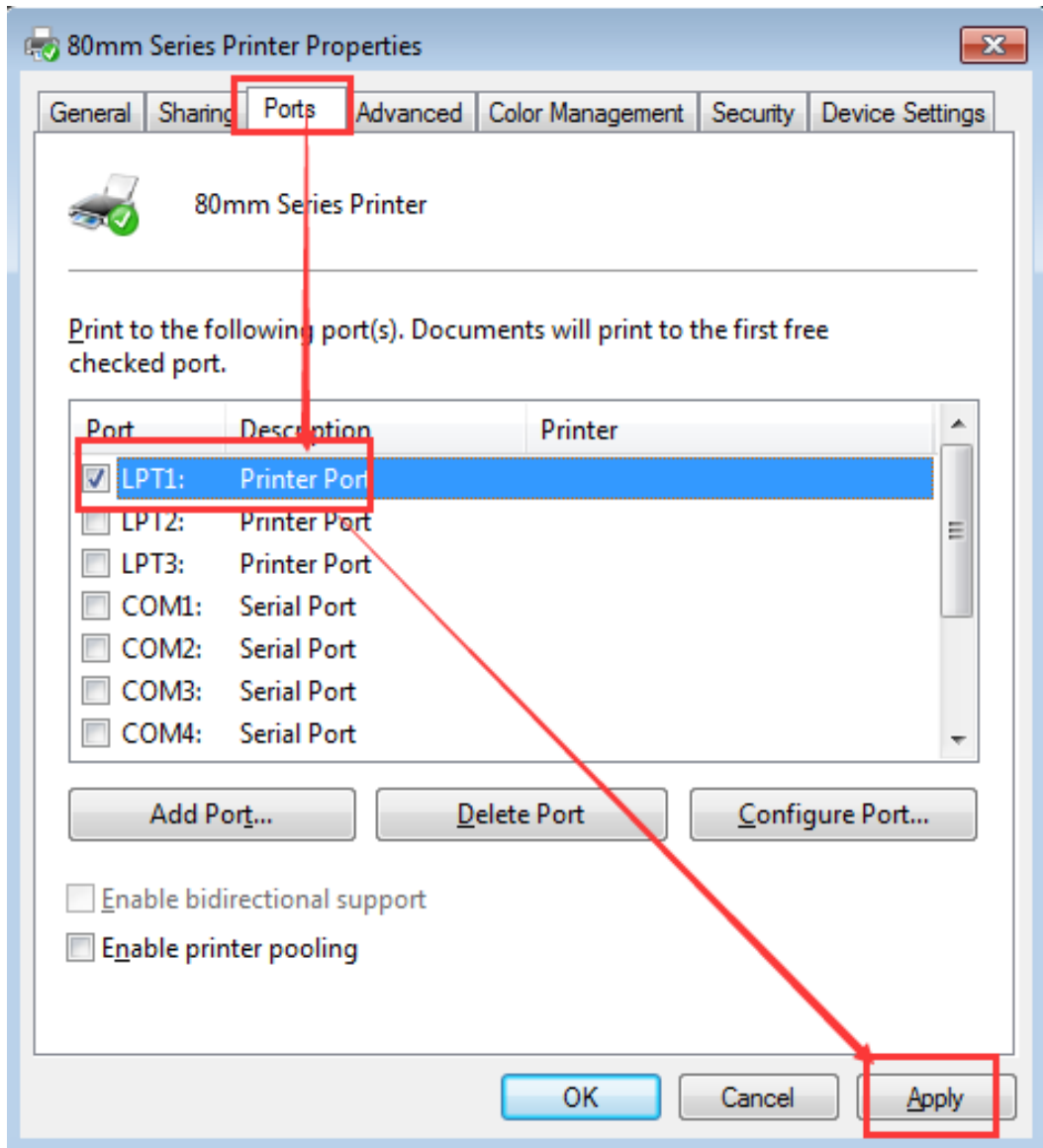
"Bit per second" means Serial port baud rate, it must same as printer setting. For example, if printer baud rate is "19200bsp", then you must select "19200" on "Bit per second", just as above picture. (Factory default baud rate is 9200bps)

"Flow control", we recommend select "Hardware"

After setting, click "Apply", and then click "OK".

2.3 Parallel Port Configuration

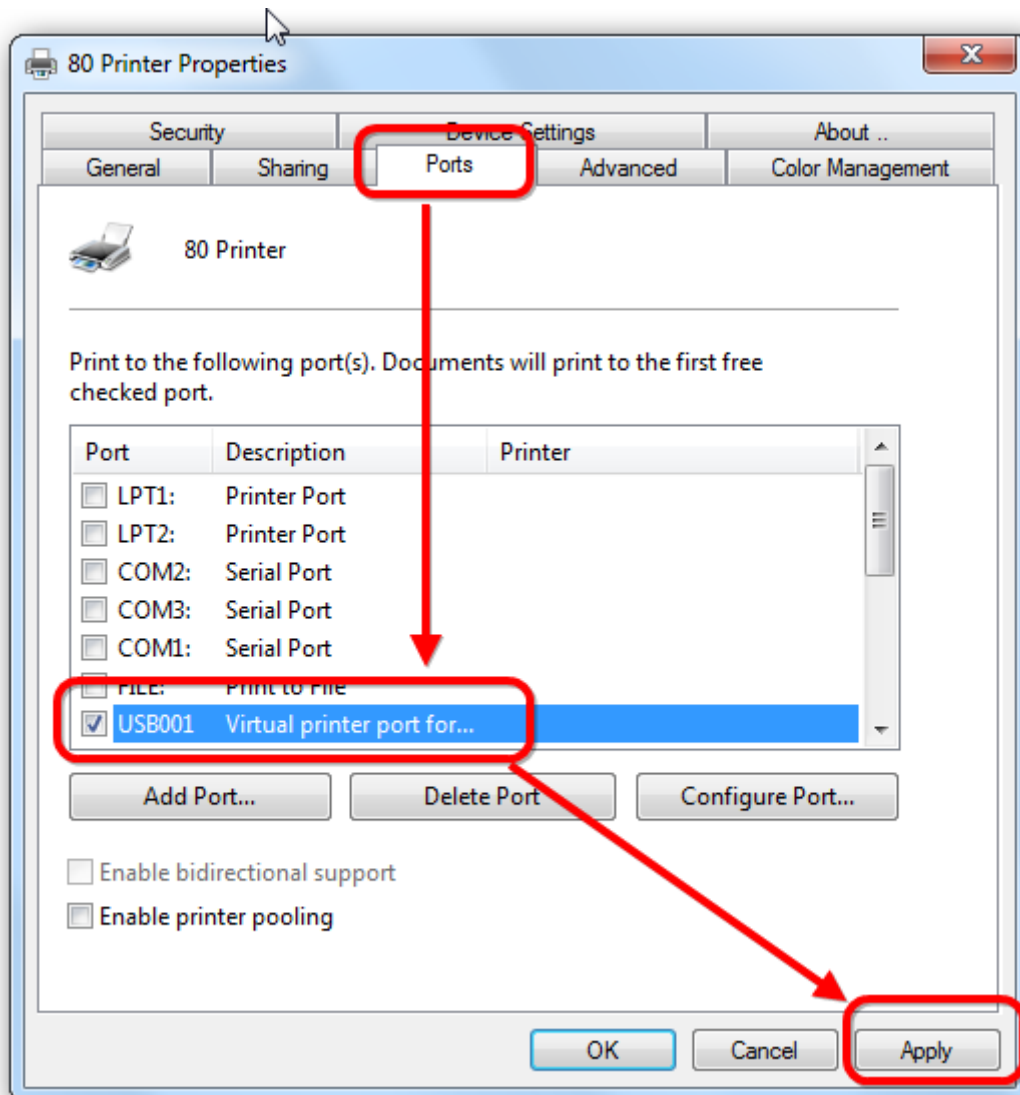
On 80 Printer Properties "Ports", you could configure the Parallel Port to communicate printer to computer, see the below picture:



Select available computer LPT port, such as the above picture shows “LPT1”, then click “Apply” to finish the configuration.

2.4 USB Port Configuration

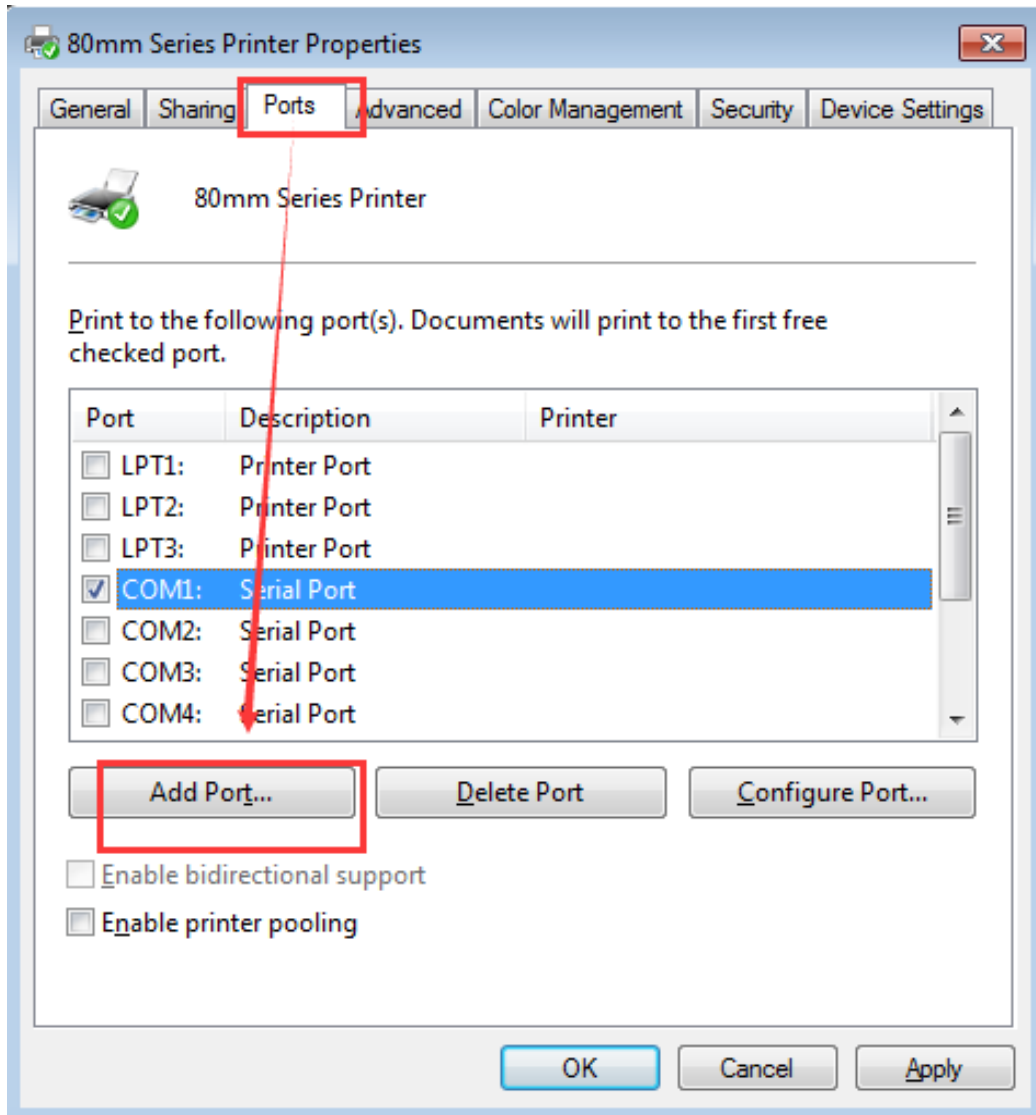
On 80 Printer Properties “Ports”, you could configure the USB Port to communicate printer to computer, see the below picture:



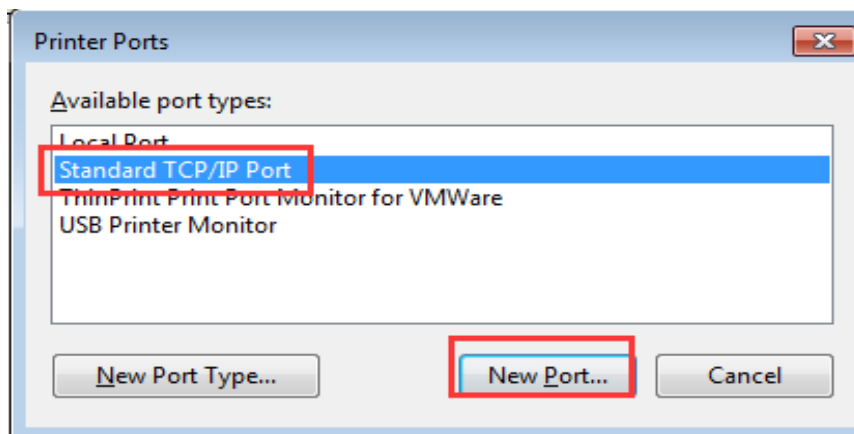
Select available computer USB communication port, such as the above picture shows “USB001”, and then click “Apply” to finish the configuration.

2.5 Ethernet Port Configuration

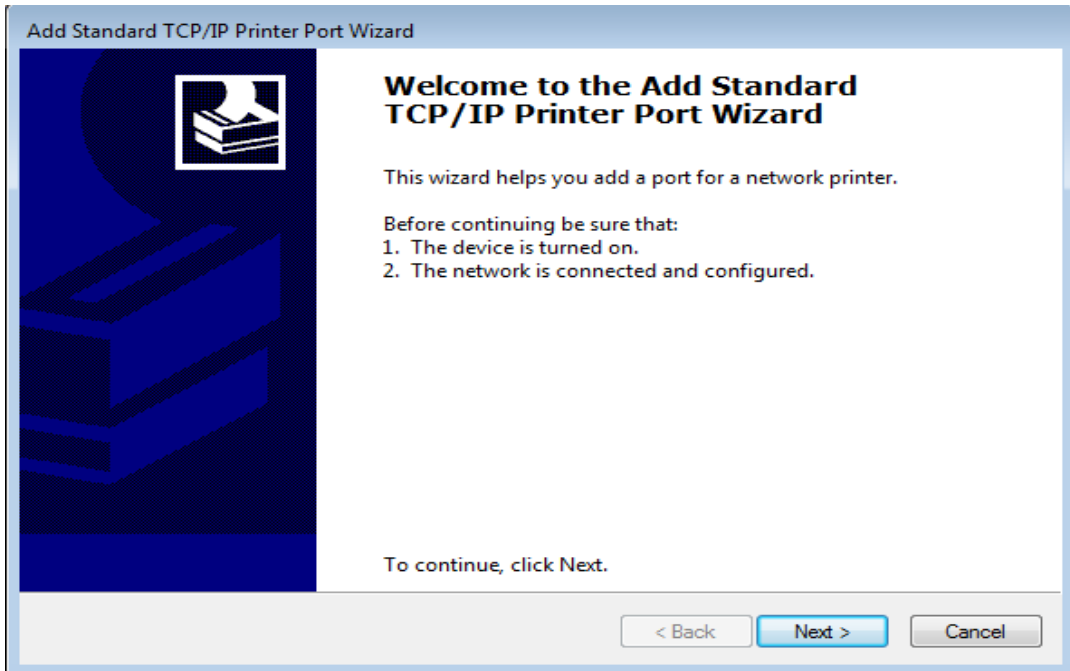
On 80 Printer Properties “Ports”, you could configure the Ethernet Port to Communicate printer to computer, see the below picture:



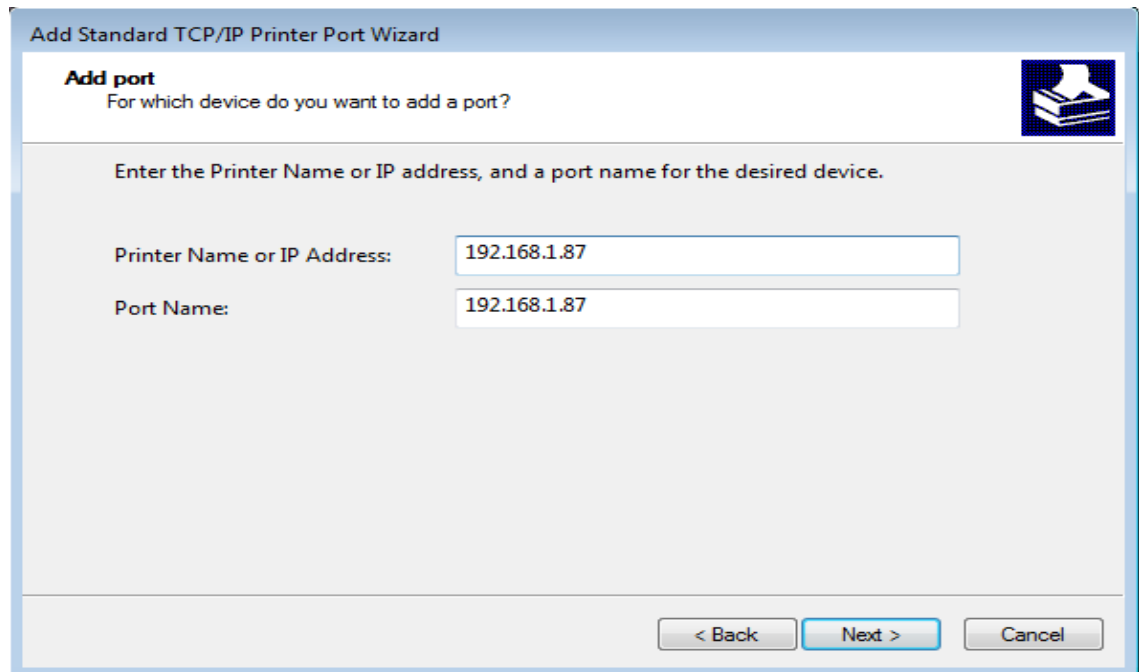
Click “port” and then click the “Add port”, then shows as below picture:



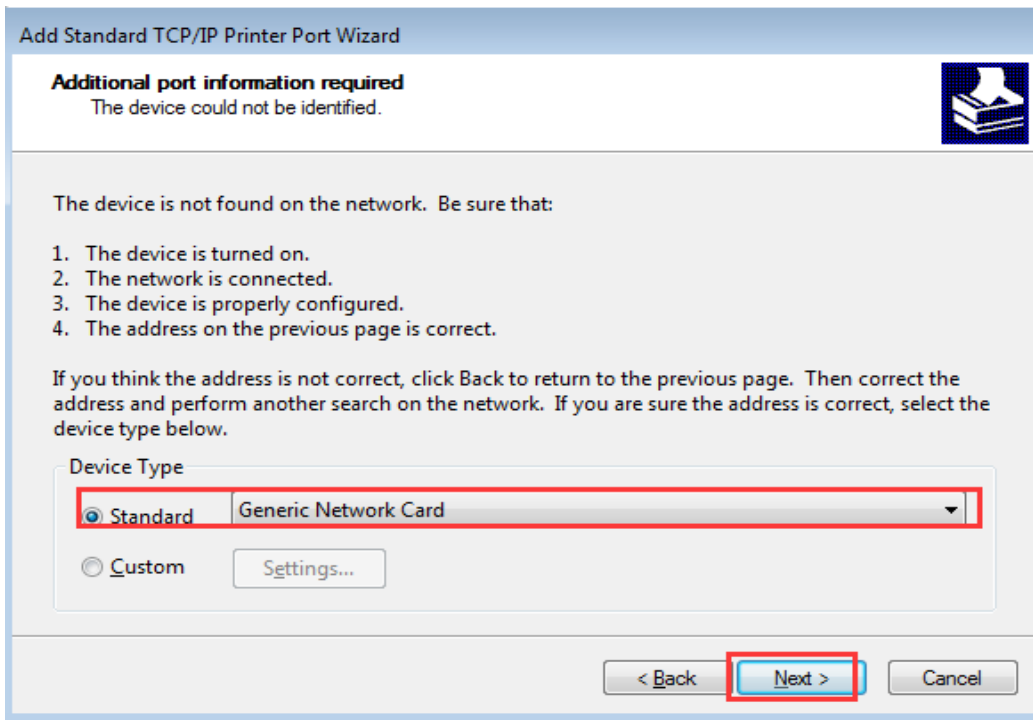
Select” Standard TCP/IP Port”, and click” New Port...”, then shows as below picture:



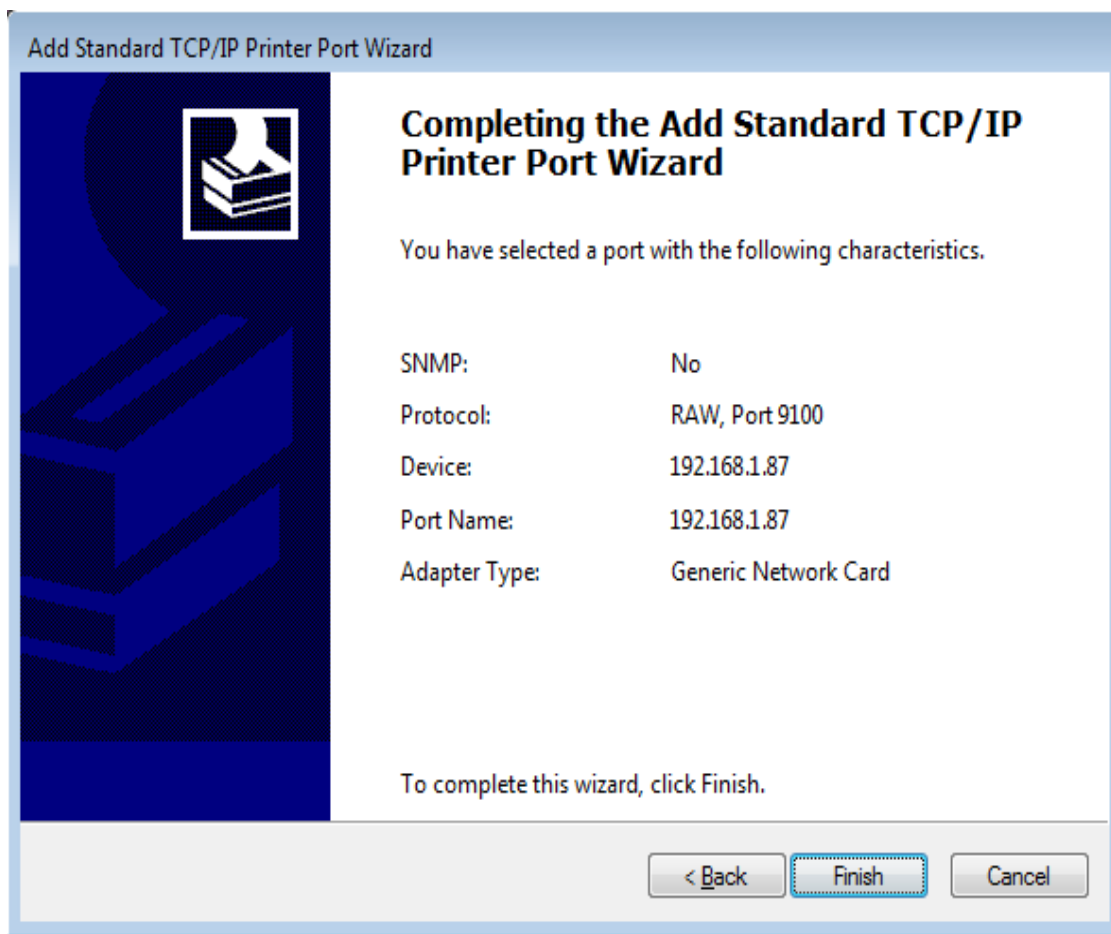
Then click “Next”.

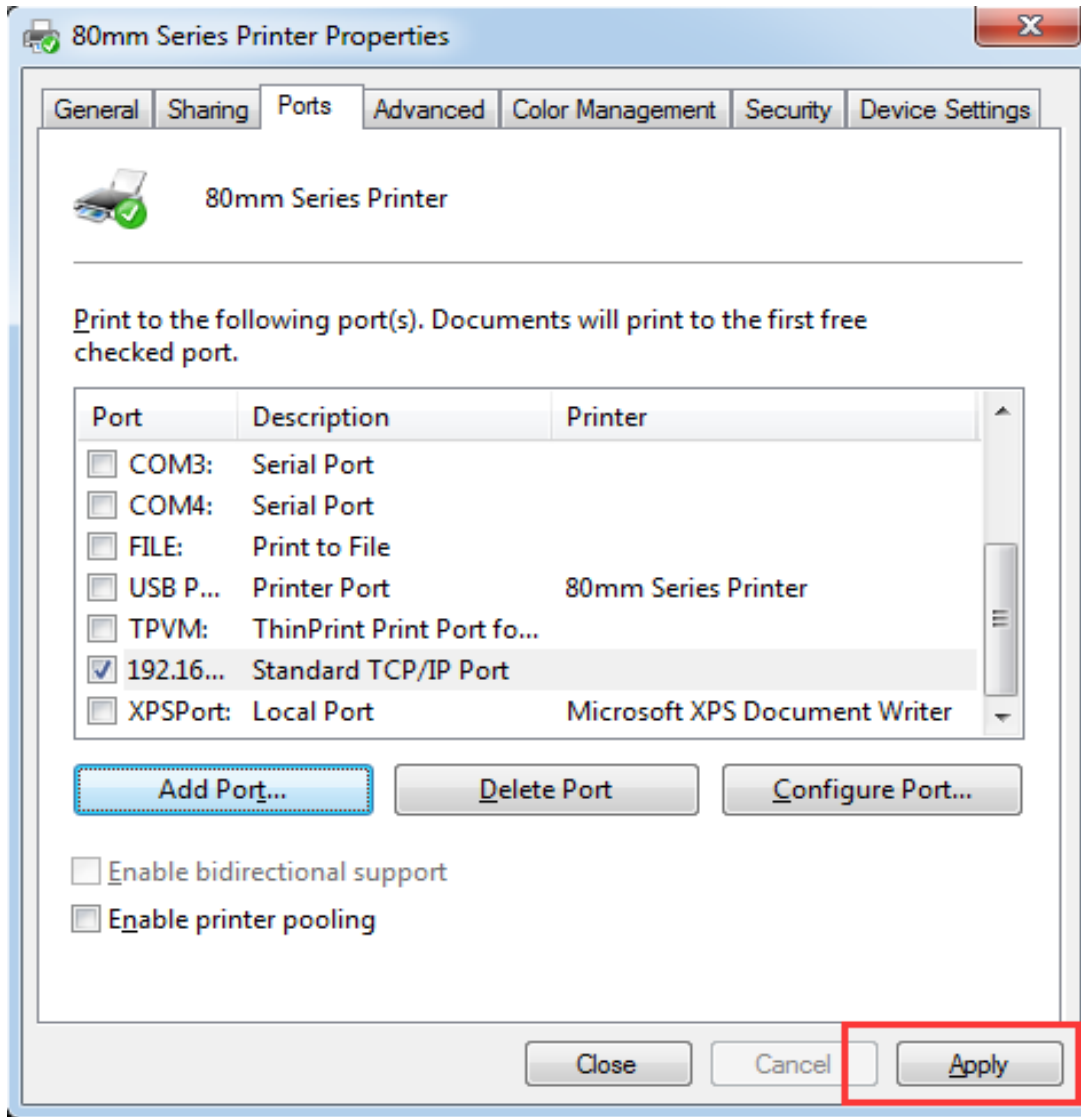


Enter the IP address of the printer Ethernet port, Factory default IP is “192.168.1.87”.



When it shows as below picture, select “Standard” and then click “Next”.

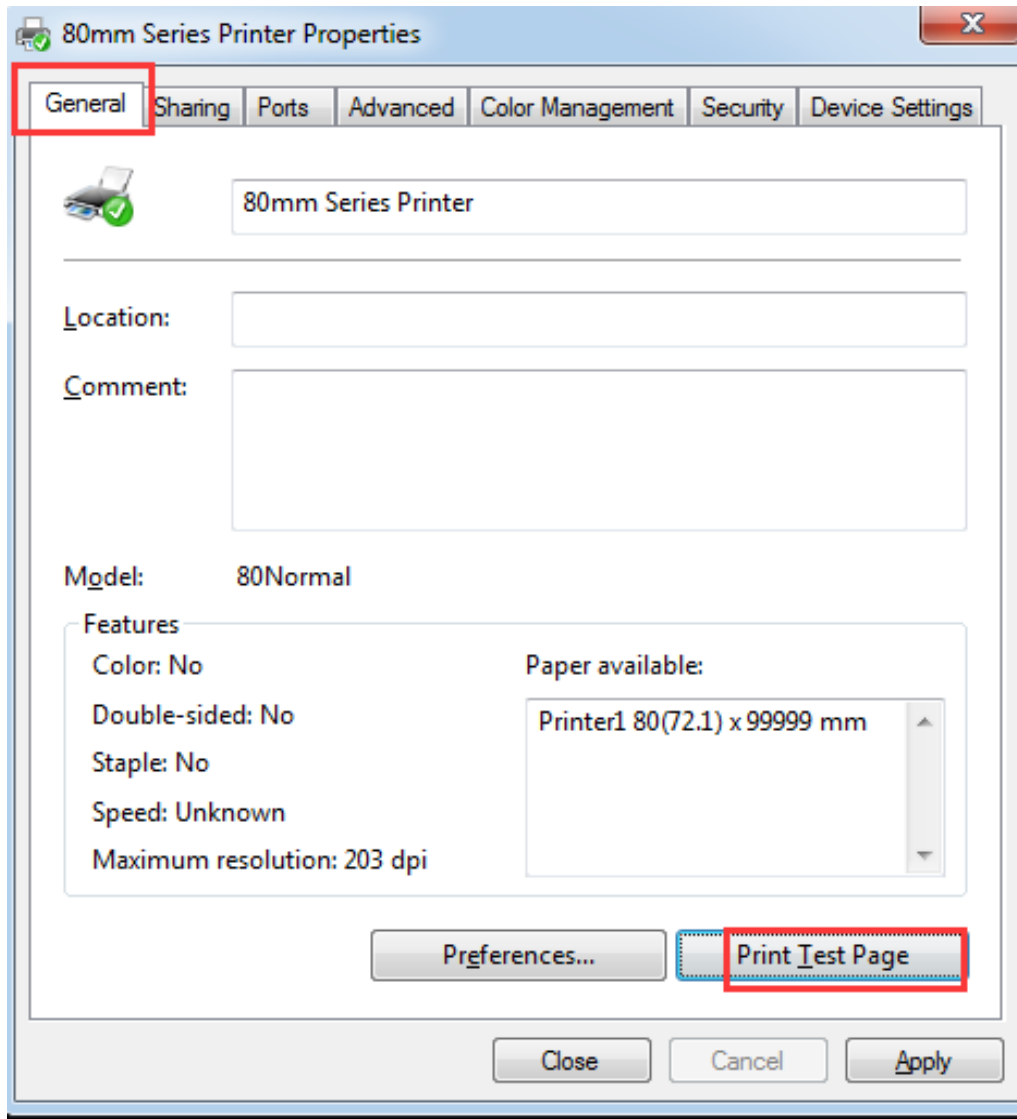




2.6 Printing Test Page

After finishing port configuration, we start to print test page.

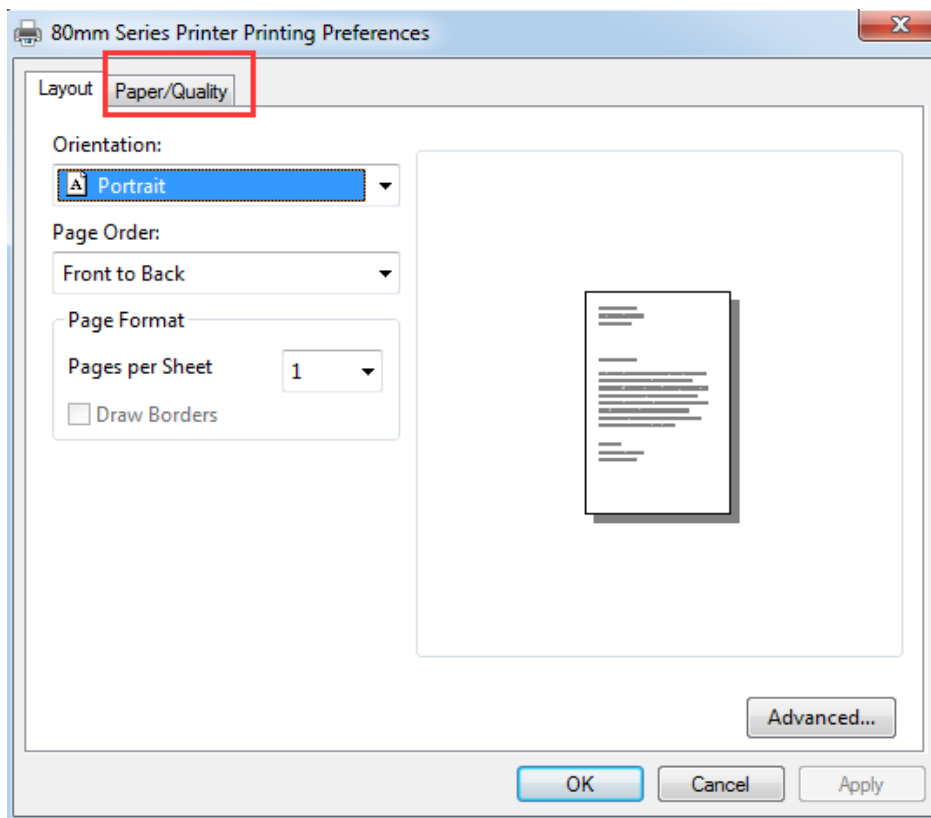
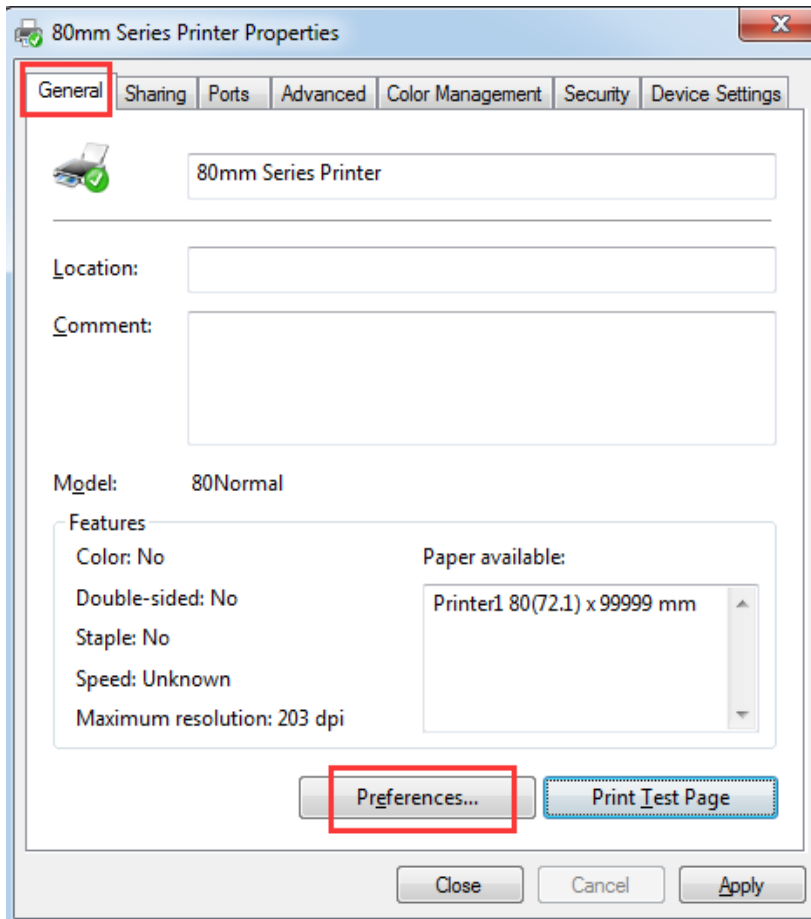
On 80 Printer Properties "General":

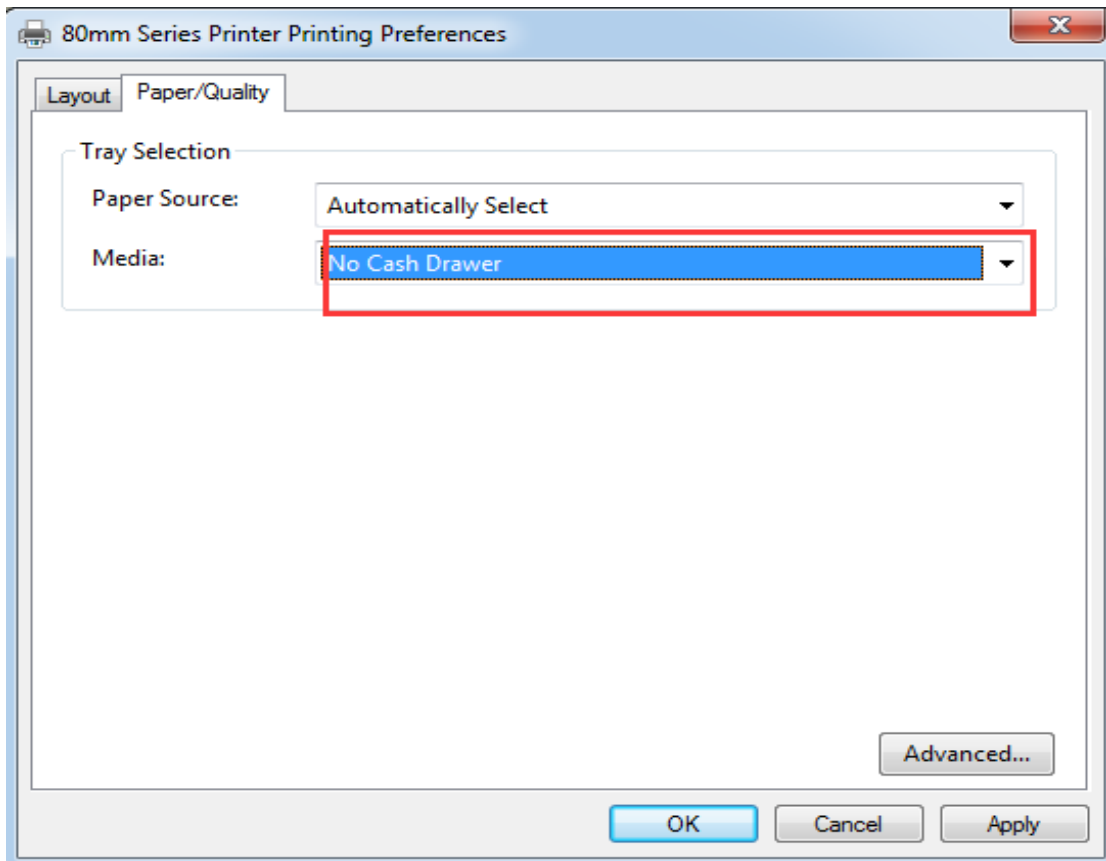


Click “Print Test Page”, the printer will print test page, which means the printer has been connected with computer successfully and the port configuration is correct.

2.7 Other Properties and Function Configuration

You could set the paper specification etc., please refer to the follows:



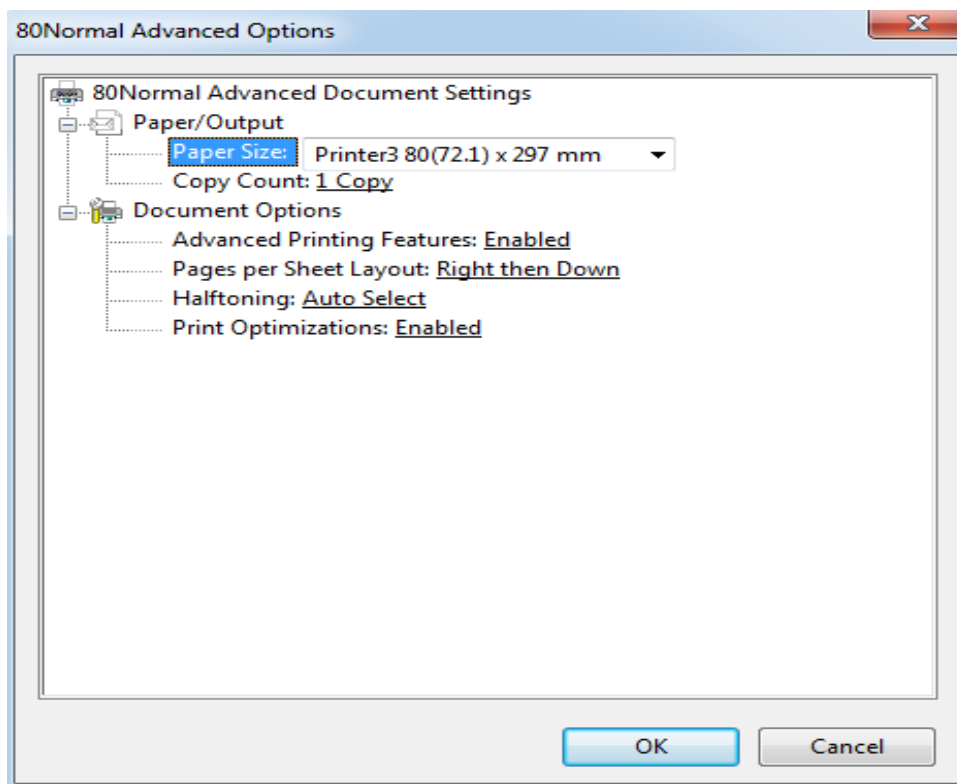
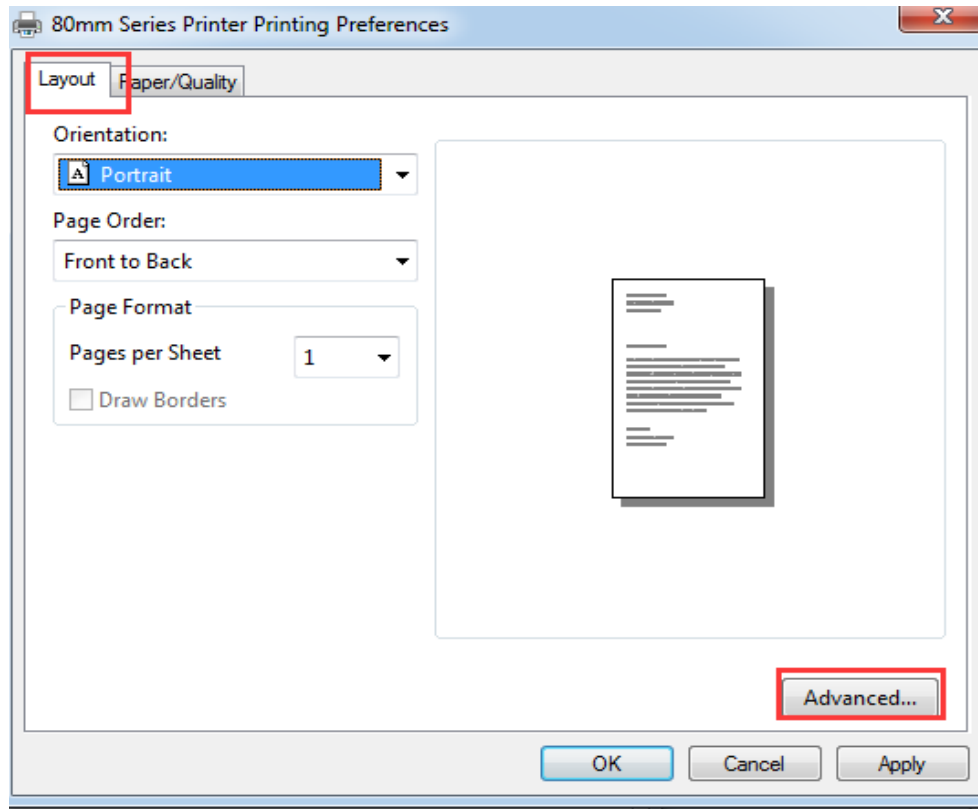


Cash Drawer Setting:

No Cash Drawer: Cash Drawer is not connected.

Cash Drawer Before Printing: Open cash drawer before printing

Cash Drawer After Printing: Open cash drawer after printing



Paper Size:

- 1、 80 x 210 mm
- 2、 80 x 297 mm
- 3、 80 x 3276 mm

Output Bin:

No Beep: the buzzer don't prompt

[Form]Beep After Printing: Buzzer prompt after finishing printing each page

[Form]Beep Before Printing: Buzzer prompt before printing each page

[Report]Beep After Printing: Buzzer prompt after finishing printing each file

[Report]Beep Before Printing: Buzzer prompt before printing each file